



— EFFECTIVE SEPTEMBER 2006 —

LIGHTING PRODUCTS

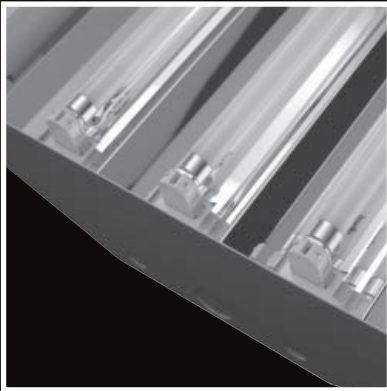
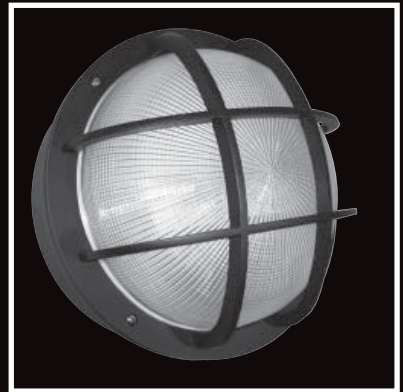
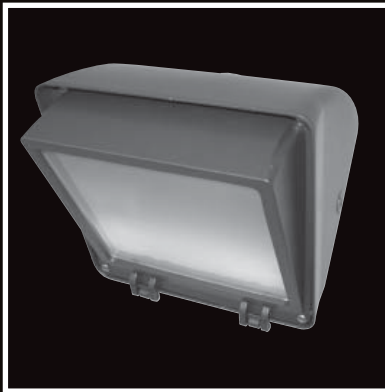


Table of Contents

INDUSTRIAL LIGHTING

High Bay Fluorescent	1
High Bay Aluminum and Acrylic	2
Low Bay Aluminum and Acrylic	3
Vaportite Fluorescent	4
Lamps	4

HID AND OUTDOOR LIGHTING

Wallpacks – Full Cutoff and Semi-Cutoff	5
Wallpacks – Bulkhead	6
Wallpacks – Bravo Fluorescent & Radius	7
Wallpacks – Mini and Compact	8
Wallpacks – Medium	9
Wallpacks – Large	9
Wallpacks – Large Deep and Slimline	10
Floodlights – Easy-Adjustable Flood™	12
Floodlights – 1000 Watt and Large Flood	13
Floodlights – Low Profile	14
Floodlights – Round Back	14
Floodlights – Medium and Compact	15
Floodlights – Fluorescent	16
Floodlights – Par Flood and Quartz Bullet	17
Floodlights – Quartz	18

VANDAL RESISTANT AND GARAGE

Entry Cylinders	19
Vandal Resistant Entry	19
Small and Large Vandal Resistant	20
Garage Lighting	21

EMERGENCY AND EXIT LIGHTING

LED Exit Light	22
Die-Cast Aluminum Exit Light	22
Edge-Lit Exit Light	23
Wet Location Exit Light	23
Self Luminous Exit Light	24
Combination LED/Incandescent Exit Light	25
Twin Head Emergency Light	26
Fixed Optics Emergency Light	26
Heavy Duty Emergency Light	27
Remote Heads & Accessories	27



VAPORTITE

Pendant, Box & Wall Lights	28
Fluorescent Pendant, Box & Wall Lights	29
Shades and Wire Guards	30
Frosted Glass, Swivel, and Cowl Arm	31

SECURITY LIGHTING

Dusk-to-Dawn	32
Motion Lights	33

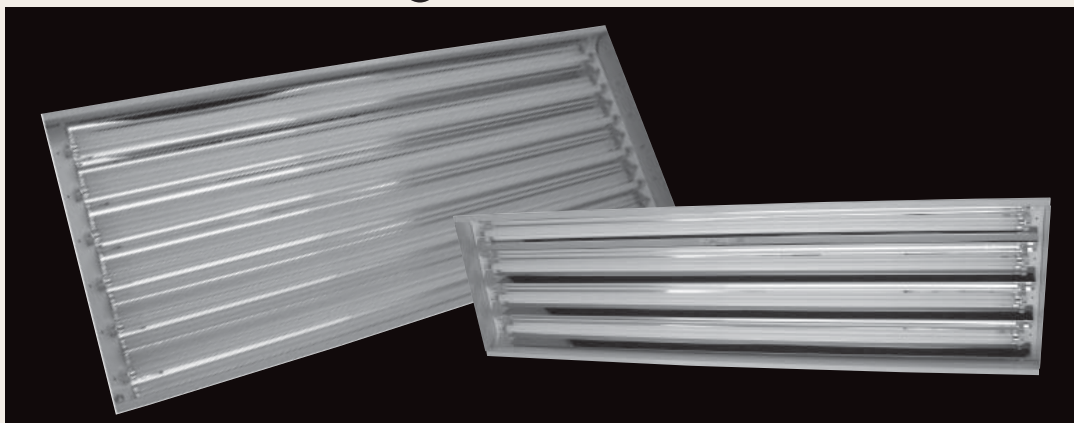
SPECIALTY LIGHTING AND BALLAST KITS

Landscape Pars & Bullets	34
Landscape Pagodas	35
Undercabinet	36
Ballast Kits	37

WORKLIGHTS AND ACCESSORIES

Temporary Construction Worklight	38
Portable Floor Worklight	38
Wire Guards	39
Baffles	39
Glare Shields	39
Post Top Fitter	40
Heavy Duty Ground Stake	40
Safety Cable	40
Bulkhead Trim Ring	40

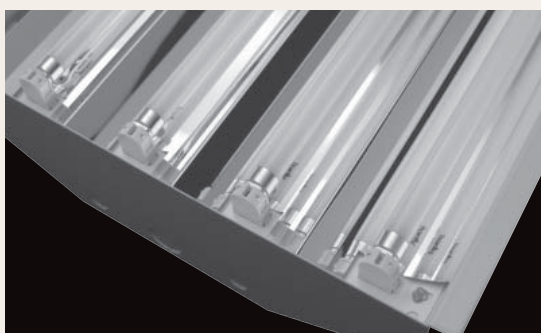
HIGH BAY FLUORESCENT 



LAMPS INCLUDED

NSi's Fluorescent High Bay fixtures have precision die formed steel housing. Can be mounted with braided wire hanging system, chain, box or pendant with easy bottom ballast access and easy top wiring through access plate. Reflectors are aluminum beveled Miro4 reflectors and lampholders are rotary locking type. UL listed for dry/damp locations.

All fixtures are sold with lamps; call for special no-lamp order pricing.



energy saving
FLUORESCENT!

	L	H	W
4 LAMP	48"	3.9"	12.6"
6 LAMP	48"	3.9"	19.9"

CATALOG NO.	UPC CODE	DESCRIPTION	VOLTS	BALLAST	LAMP	SHIPPING WEIGHT (LBS)
FLHB4T5L	05785	4 Lamp T5 High Output Fluorescent High Bay w/Lamps	120-277	ELECTRONIC	4 T5 HO 54w	18
FLHB6T5L	05786	6 Lamp T5 High Output Fluorescent High Bay w/Lamps	120-277	ELECTRONIC	6 T5 HO 54w	23
FLHB4T8L	05787	4 Lamp T8 High Output Fluorescent High Bay w/Lamps	120-277	ELECTRONIC	4 T8 HO 32w	18
FLHB6T8L	05788	6 Lamp T8 High Output Fluorescent High Bay w/Lamps	120-277	ELECTRONIC	6 T8 HO 32w	23

**ADVANTAGES:
fluorescent high bay**

- Greater lumens per watt
- Very high lumen maintenance
- Instant-On – no restrike time
- Better suited for motion sensing
- Higher fixture efficiency

UP TO 50% LESS ENERGY CONSUMED!

SAVINGS PER FIXTURE VS. 400W METAL HALIDE:

4 LAMP T-5: 215 WATTS
6 LAMP T-8: 226 WATTS



HIGH BAY ALUMINUM 



1
H DIA
16" 24.6" 16.2"



2
H DIA
22" 23.5" 23.5"

High Bay fixtures feature die cast ballast housing, powder coated finish, hook included. Integral wiring box. 16" or 22" high bay spun aluminum reflector is packaged separately.

CATALOG NO.	UPC CODE	FIG. NO.	DESCRIPTION	VOLTS	BALLAST	LAMP	BASE	SHIPPING WEIGHT (LBS)
HBAL16400MHQ	05789	1	16" Aluminum High Bay 400 Watt Metal Halide	120/208/240/277	QUAD CWA	ED37	mogul	20
HBAL16250MHQ	05790	1	16" Aluminum High Bay 250 Watt Metal Halide	120/208/240/277	QUAD CWA	ED28	mogul	20
HBAL16400SQ	05791	1	16" Aluminum High Bay 400 Watt Sodium	120/208/240/277	QUAD CWA	ED23 1/2	mogul	23
HBAL16250SQ	05792	1	16" Aluminum High Bay 250 Watt Sodium	120/208/240/277	QUAD CWA	ED23 1/2	mogul	20
HBAL22400MHQ	05793	2	22" Aluminum High Bay 400 Watt Metal Halide	120/208/240/277	QUAD CWA	ED37	mogul	21
HBAL22400SQ	05794	2	22" Aluminum High Bay 400 Watt Sodium	120/208/240/277	QUAD CWA	ED23 1/2	mogul	23
HB16400MHUQ	05795	1	16" High Bay UNIPAK 400 Watt Metal Halide Ballast Reflector, Lamp	120/208/240/277	QUAD CWA	ED37	mogul	22

REFLECTOR IS PACKAGED SEPARATELY FROM FIXTURE

HIGH BAY ACRYLIC 



1
H DIA
16" 25.3" 16.2"



2
H DIA
22" 27.5" 22.3"

Die cast ballast housing, powder coated finish, hook included. Integral wiring box. 16" or 22" high bay acrylic reflector is UV resistant and is packaged separately.

CATALOG NO.	UPC CODE	FIG. NO.	DESCRIPTION	VOLTS	BALLAST	LAMP	BASE	SHIPPING WEIGHT (LBS)
HBAC16400MHQ	05796	1	16" Acrylic High Bay 400 Watt Metal Halide	120/208/240/277	QUAD CWA	ED37	mogul	21
HBAC16320MHQP	05797	1	16" Acrylic High Bay 320 Watt Metal Halide Pulse Start	120/208/240/277	QUAD PULSE	ED37	mogul	20
HBAC22400MHQ	05798	2	22" Acrylic High Bay 400 Watt Metal Halide	120/208/240/277	QUAD CWA	ED37	mogul	25
HBAC22320MHQP	05799	2	22" Acrylic High Bay 320 Watt Metal Halide Pulse Start	120/208/240/277	QUAD PULSE	ED37	mogul	25

REFLECTOR IS PACKAGED SEPARATELY FROM FIXTURE

LOW BAY ALUMINUM 

Low Bay aluminum fixtures have die cast housing with powdercoat finish. Comes with acrylic drop lens, hook included with integral wiring box. Adjustable accessory bracket; mogul socket. 16" or 22" low bay aluminum reflector and drop lens are packaged separately.



1
H DIA
16" 24.6" 16.2"



2
H DIA
22" 26.8" 22.3"

CATALOG NO.	UPC CODE	FIG. NO.	DESCRIPTION	VOLTS	BALLAST	LAMP	BASE	SHIPPING WEIGHT (LBS)
LBAL16320MHQP	05800	1	16" Aluminum Low Bay 320 Watt Metal Halide Pulse Start Drop Lens	120/208/240/277	QUAD PULSE	ED37	mogul	19
LBAL22350MHQP	05801	2	22" Aluminum Low Bay 350 Watt Metal Halide Pulse Start Drop Lens	120/208/240/277	QUAD PULSE	ED37	mogul	19
LBAL22250MHQ	05802	2	22" Aluminum Low Bay 250 Watt Metal Halide Drop Lens	120/208/240/277	QUAD CWA	ED28	mogul	24
LBAL22400MHQ	05803	2	22" Aluminum Low Bay 400 Watt Metal Halide Drop Lens	120/208/240/277	QUAD CWA	ED37	mogul	24

REFLECTOR AND DROP LENS ARE PACKAGED SEPARATELY FROM FIXTURE

LOW BAY ACRYLIC 

Low Bay acrylic fixtures have die cast aluminum powdercoat finish. Hook is included with integral wiring box. Adjustable accessory bracket; mogul socket. 16" or 22" low bay acrylic reflector and drop lens are packaged separately.



1
H DIA
16" 24.6" 16.2"



2
H DIA
22" 26.8" 22.3"

CATALOG NO.	UPC CODE	FIG. NO.	DESCRIPTION	VOLTS	BALLAST	LAMP	BASE	SHIPPING WEIGHT (LBS)
LBAC16250MHQP	05804	1	16" Acrylic Low Bay 250 Watt Metal Halide Pulse Start Drop Lens	120/208/240/277	QUAD PULSE	ED37	mogul	20
LBAC22350MHQP	05805	2	22" Acrylic Low Bay 350 Watt Metal Halide Pulse Start Drop Lens	120/208/240/277	QUAD PULSE	ED37	mogul	23
LBAC22250MHQ	05806	2	22" Acrylic Low Bay 250 Watt Metal Halide Drop Lens	120/208/240/277	QUAD CWA	ED28	mogul	24

REFLECTOR AND DROP LENS ARE PACKAGED SEPARATELY FROM FIXTURE

VAPORTITE FLUORESCENT



FLVT L H W
48" 5" 6.7"

LAMPS INCLUDED

NSi's Vaportite Fluorescent offers one or two lamp T-5 or T-8, IP65 and/or IP67. This vaportite's features include an impact resistant lens, continuous-poured "memory seal" gasketing, reinforced FRP

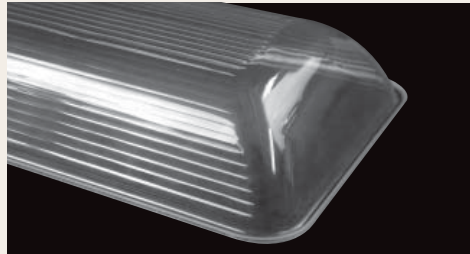
housing, a rigid universal gear tray and strong non-metallic clips.

Call about optional latches and mounting hardware.

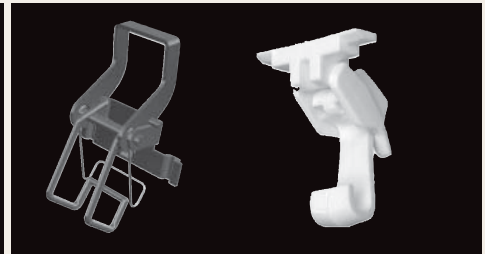
energy saving
FLUORESCENT!



HOUSING



LENS



CLIPS

CATALOG NO.	UPC CODE	DESCRIPTION	VOLTS	BALLAST	LAMP	SHIPPING WEIGHT (LBS)
FLVTD4T832	05808	2 Lamp T-8 Vaportite 4' Enclosed And Gasketed	120-277	ELECTRONIC	2 T8 VT	8
FLVTD4T554HO	05809	2 Lamp T-5 Vaportite 4' Enclosed And Gasketed	120-277	ELECTRONIC	2 T5 HO VT	8
FLVTS4T832	05810	1 Lamp T-8 Vaportite 4' Enclosed And Gasketed	120-277	ELECTRONIC	1 T8 VT	8
FLVTS4T554	05811	1 Lamp T-5 Vaportite 4' Enclosed And Gasketed	120-277	ELECTRONIC	1 T5 VT	8

LAMPS



CATALOG NO.	UPC CODE	DESCRIPTION	SHIPPING WEIGHT (LBS)
LT85K32	05812	32 W 4' T-8 Lamp	1
LT55K54	05813	54 W 4' T-5 Lamp	1

WALLPACKS – FULL CUTOFF

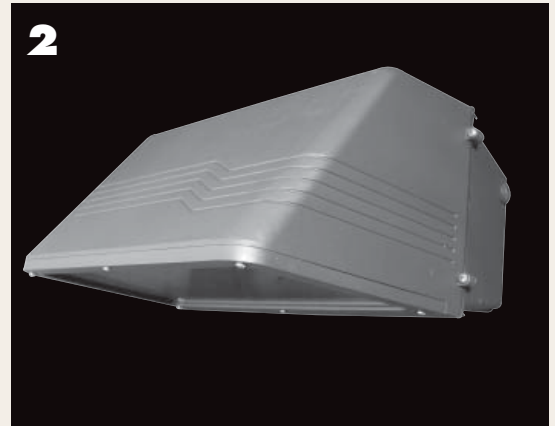
LAMP INCLUDED

NSi Full Cutoff Wallpacks have a tempered borosilicate glass lens with die cast hinged front and rear housings, silicone gasketing and stainless steel hardware. Porcelain socket and bracket. Full cutoff wallpacks meet “dark sky” compliance. Excellent for use as an uplight.

DARK SKY
compliant!



1
MFC H 7.2" W 14.25" D 11.4"



2
LFC H 9.2" W 18.25" D 17.2"

CATALOG NO.	UPC CODE	FIG. NO.	DESCRIPTION	VOLTS	BALLAST	LAMP	BASE	SHIPPING WEIGHT (LBS)
WPMFC175MHQ	05817	1	Full Cutoff Med Wallpak 175 Watt Metal Halide	120/208/240/277	QUAD CWA	ED17	medium	17
WPMFC150SQ	05818	1	Full Cutoff Med Wallpak 150 Watt Sodium	120/208/240/277	QUAD HX-HPF	ED23-½	medium	18
WPLFC250MHQ	05819	2	Full Cutoff Large Wallpak 250 Watt Metal Halide	120/208/240/277	QUAD CWA	ED28	mogul	25
WPLFC250SQ	05820	2	Full Cutoff Large Wallpak 250 Watt Sodium	120/208/240/277	QUAD CWA	ED18	mogul	24
WPLFC400MHQ	05821	2	Full Cutoff Large Deep Wallpak 400 Watt Metal Halide	120/208/240/277	QUAD CWA	ED37	mogul	27
WPLFC400SQ	05822	2	Full Cutoff Large Deep Wallpak 400 Watt Sodium	120/208/240/277	QUAD CWA	ED18	mogul	29

WALLPACKS – SEMI CUTOFF

LAMP INCLUDED

NSi Semi Cutoff Wallpacks have a tempered frosted anti-glare glass lens with die cast hinged front cover for easy relamping and servicing. Stainless steel hardware and silicone gasketing. Semi cutoff wallpacks are “dark sky” friendly.

Anti-Glare
LENS TECHNOLOGY!
DARK SKY
friendly!



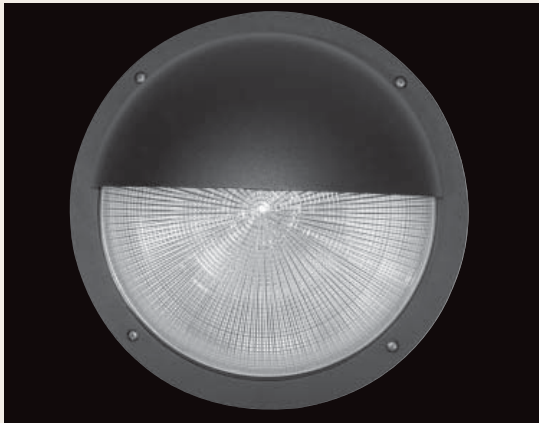
1
MSC H 9.1" W 14.2" D 8.5"



2
LSC H 9.8" W 17.8" D 14.4"

CATALOG NO.	UPC CODE	FIG. NO.	DESCRIPTION	VOLTS	BALLAST	LAMP	BASE	SHIPPING WEIGHT (LBS)
WPMSC175MHQ	05823	1	Semi Cutoff Medium Wallpak 175 Watt Metal Halide	120/208/240/277	QUAD CWA	ED28	mogul	19
WPMSC150SQ	05824	1	Semi Cutoff Medium Wallpak 150 Watt Sodium	120/208/240/277	QUAD HX-HPF	ED23-½	mogul	19
WPLSC400MHQ	05825	2	Semi Cutoff Large Deep Wallpak 400 Watt Metal Halide	120/208/240/277	QUAD CWA	BT37	mogul	26
WPLSC400SQ	05826	2	Semi Cutoff Large Deep Wallpak 400 Watt Sodium	120/208/240/277	QUAD CWA	ED28	mogul	26

WALLPACKS – BULKHEAD / EYELID



WPBE
DEPTH 9.25"
DIA 15"

AVAILABLE IN *energy saving*
FLUORESCENT!

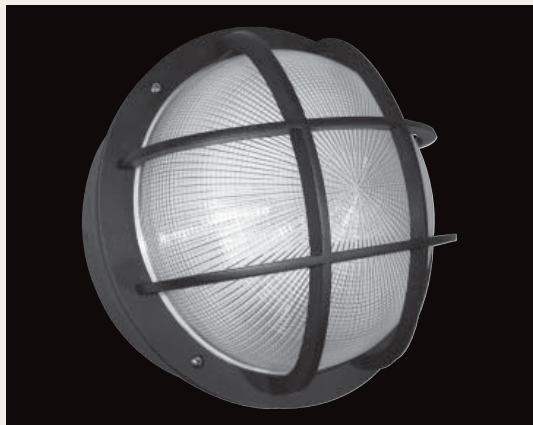
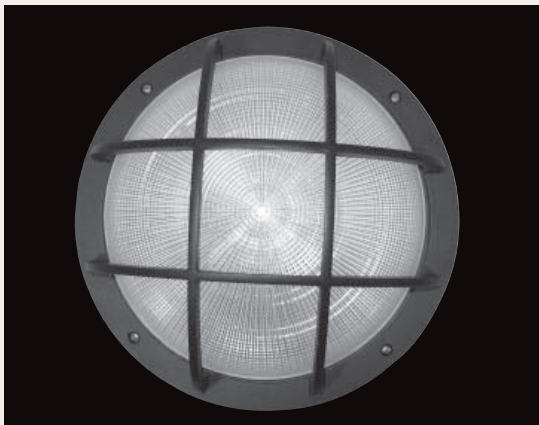
LAMP INCLUDED

NSi Eyelid style bulkhead wallpacks have a large 15" diameter die cast surface mount housing with stainless steel hardware. Bulkhead wallpacks come with silicone gasketing and borosilicate glass lens. Fluorescent version has 2 x 42 6500K lamps for color that compliments metal halide.

for Bulkhead Trim Rings (BHTR) see page 41

CATALOG NO.	UPC CODE	DESCRIPTION	VOLTS	BALLAST	LAMP	BASE	SHIPPING WEIGHT (LBS)
WPBE175MHQB	05830	Bulkhead Wallpak Eyelid 175 Watt Metal Halide Bronze	120/208/240/277	QUAD CWA	ED17	medium	23
WPBE150SQB	05831	Bulkhead Wallpak Eyelid 150 Watt Sodium Bronze	120/208/240/277	QUAD HX-HPF	ED23-½	medium	24
WPBE84FB	05832	Bulkhead Wallpak Eyelid 84 Watt Fluorescent Bronze	120V	ELECTRONIC	2x42 PLC		17

WALLPACKS – BULKHEAD / GRID



WPBG
DEPTH 9.25"
DIA 15"

AVAILABLE IN *energy saving*
FLUORESCENT!

LAMP INCLUDED

NSi Grid style bulkhead wallpacks have a large 15" diameter die cast surface mount housing with stainless steel hardware. Bulkhead wallpacks come with silicone gasketing and borosilicate glass lens. Fluorescent version has 2 x 42 6500K lamps for color that compliments metal halide.

for Bulkhead Trim Rings (BHTR) see page 40

CATALOG NO.	UPC CODE	DESCRIPTION	VOLTS	BALLAST	LAMP	BASE	SHIPPING WEIGHT (LBS)
WPBG175MHQB	05827	Bulkhead Wallpak Grid 175 Watt Metal Halide Bronze	120/208/240/277	QUAD CWA	ED17	medium	24
WPBG150SQB	05828	Bulkhead Wallpak Grid 150 Watt Sodium Bronze	120/208/240/277	QUAD HX-HPF	ED23-½	medium	25
WPBG84FB	05829	Bulkhead Wallpak Grid 84 Watt Fluorescent Bronze	120V	ELECTRONIC	PLC		18

NOTE: BULKHEAD FIXTURES CAN BE RECESSED MOUNTED USING PART NUMBER BHTR, PAGE 41

WALLPACK – EURO-STYLE FLUORESCENT AND RADIUS

LAMP INCLUDED

NSi's Euro-style fluorescent wallpack has color-matched vandal resistant polycarbonate front housing with

clear ribbed lens area and aluminum reflector; hinged for easy relamping. Die cast back housing.



1



energy saving
FLUORESCENT!

WPR **H** **W** **D**
 11.75" 10.5" 7.25"

LAMP INCLUDED

NSi's Full Cutoff Radius Wallpack features a clear tempered glass lens, hinged for easy relamping; bronze powdercoat finish and heavy duty

die-cast housing. Anodized aluminum designed reflector for best light efficiency. Meets dark sky requirements.



2



DARK SKY
compliant!

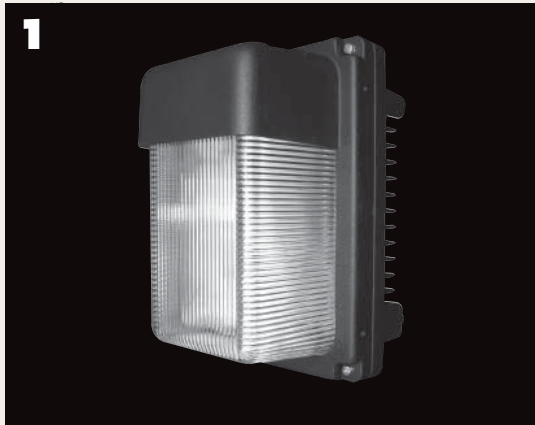
WPRFC **H** **W** **D**
 9.3" 14.4" 8.5"

CATALOG NO.	UPC CODE	FIG. NO.	DESCRIPTION	VOLTS	BALLAST	BASE	SHIPPING WEIGHT (LBS)	
WPRFC175MHQ	05816	2	Radius Full Cutoff 175 Watt Metal Halide	120/208/240/277	QUAD CWA	ED28	mogul	15.7
WPRFC150SQ	05815	2	Radius Full Cutoff 150 Watt Sodium Quad HX-HPF	120/208/240/277	QUAD HX-HPF	ED28	mogul	14.5
WPR84FL	05833	1	Euro Fluorescent Wallpack 84 Watt	120V	ELECTRONIC	PLC		13

SUPER DUTY MINIPACK

LAMP INCLUDED

The Super Duty Minipack has rugged die-cast housing and borosilicate prismatic glass lens. Available in open and shielded face. Can be equipped with photocontrol.



WPSM **H** **W** **D**
 11.75" 7.5" 7.5"



WPSM **H** **W** **D**
 11.75" 7.5" 7.25"

CATALOG NO.	UPC CODE	FIG. NO.	DESCRIPTION	VOLTS	BALLAST	LAMP	BASE	SHIPPING WEIGHT (LBS)
WPSMS70MHQ	05294	1	Rugged Mini Wallpack Shielded Lens 70 Watt Metal Halide	120/208/240/277	QUAD HX-NPF	ED17	medium	11
WPSMS70SQ	05295	1	Rugged Mini Wallpack Shielded Lens 70 Watt Sodium	120/208/240/277	QUAD HX-NPF	ED17	medium	11
WPSMS42FL	05293	1	Fluorescent Rugged Mini Wallpack Shielded Lens 42 Watt	120V	ELECTRONIC	PLC		10
WPSM070MHQ	05297	2	Rugged Mini Wallpack Open Lens 70 Watt Metal Halide	120/208/240/277	QUAD HX-NPF	ED17	medium	10
WPSM070SQ	05298	2	Rugged Mini Wallpack Open Lens 70 Watt Sodium	120/208/240/277	QUAD HX-NPF	ED17	medium	10
WPSM042FL	05296	2	Fluorescent Rugged Mini Wallpack Open Lens 42 Watt	120V	ELECTRONIC	PLC		9

MINI WALLPACK 



POLYCARBONATE LENS

H 11" W 6.9" D 5.2"

DIE CAST AND GLASS LENS

H 12" W 7.3" D 5.3"

LAMP INCLUDED

Mini wallpacks are available with a one-piece polycarbonate housing and lens (1) or with a die-cast housing and borosilicate glass lens (2). UL Listed for wet location use. Excellent for security and perimeter lighting and commercial and industrial applications. Polycarbonate version available with built-in photocontrol. Die cast version can be field installed with photocontrol.

CATALOG NO.	UPC CODE	FIG. NO.	DESCRIPTION	VOLTS	BALLAST	LAMP	BASE	SHIPPING WEIGHT (LBS)
WP42FL	05834	1	Mini Wallpak Die Cast 42W Fluorescent	120V	ELECTRONIC	PLC		8
WP26FLPC	05839	1	Mini Wallpak 26 Watt Fluorescent With Photocontrol	120V	ELECTRONIC	PLC		5
WP70S	05841	1	Mini Wallpak 70 Watt Sodium	120V	R-NPF	ED17	medium	5
WP70SPC	05842	1	Mini Wallpak 70 Watt Sodium With Photocontrol	120V	R-NPF	ED17	medium	5
WPGC100MHQ	05843	2	Mini Wallpak Die Cast 100 Watt Metal Halide	120/208/240/277	QUAD HX-NPF	ED17	medium	12
WPGC42FL	05844	2	Mini Wallpak Die Cast 42 Watt Fluorescent	120V	ELECTRONIC	PLC		8

COMPACT WALLPACK 



DIE CAST

H 9.5" W 8.5" D 7"

H 9.5" W 8.5" D 7.5"

H 7.5" W 8.7" D 8.9"

LAMP INCLUDED

Compact wallpacks have a die cast housing with powdercoat finish and a porcelain medium base socket assembly. One piece semi-specular asymmetric anodized aluminum reflector. UL Listed for wet location use. Excellent for security and perimeter lighting and commercial and industrial applications.

WPCSC HAS

Anti-Glare
LENS TECHNOLOGY!

for Wire Guard see page 40

CATALOG NO.	UPC CODE	FIG. NO.	DESCRIPTION	VOLTS	BALLAST	LAMP	BASE	SHIPPING WEIGHT (LBS)
WPC42FL	05835	1	Compact Wallpak 42 Watt Fluorescent Plastic Lens	120V	ELECTRONIC	PLC		6
WPC70MHQ	05845	1	Compact Wallpak 70 Watt Metal Halide Plastic Lens	120/208/240/277	QUAD HX-NPF	ED17	medium	9
WPC70S	05847	1	Compact Wallpak 70 Watt Sodium Plastic Lens	120V	R-NPF	ED23-½	medium	7
WPC100S	05848	1	Compact Wallpak 100 Watt Sodium Plastic Lens	120V	R-NPF	ED23-½	medium	7
WPC100MHQ	05846	2	Compact Wallpak 100watt Metal Halide Glass Lens	120/208/240/277	QUAD HX-HPF	ED17	medium	11
WPCSC42FL	05849	3	Semi-cut Compact Wallpak 42 Watt Fluorescent	120V	ELECTRONIC	PLC		13
WPCSC70S	05850	3	Semi-cut Compact Wallpak 70 Watt Sodium	120V	R-NPF	ED17	medium	13
WPCSC100MHQ	05851	3	Semi-cut Compact Wallpak 100 Watt Metal Halide	120/208/240/277	QUAD HX-HPF	ED17	medium	13

WALLPACK – MEDIUM

LAMP INCLUDED

NSi's Medium wallpacks have a die cast housing and lens frame with powdercoat finish and a porcelain medium base socket assembly. Front frame is hinged with a one piece stippled aluminum reflector. Heat and shock

resistant borosilicate glass lens, silicone gasketing. Listed for wet location use. Excellent for security and perimeter lighting and commercial and industrial applications.

AVAILABLE IN
energy saving
FLUORESCENT!



WPM **H** 9" **W** 14.25" **D** 7.1"

for Wire Guard see page 39

CATALOG NO.	UPC CODE	DESCRIPTION	VOLTS	BALLAST	LAMP	BASE	SHIPPING WEIGHT (LBS)
WPM84FL	05838	Medium Wallpak 84 Watt Fluorescent	120V	ELECTRONIC	2x42 6500K		8
WPM100MHQ	05852	Medium Wallpak 100 Watt Metal Halide	120/208/240/277	QUAD HX-HPF	ED17	medium	14
WPM175MHQ	05853	Medium Wallpak 175 Watt Metal Halide	120/208/240/277	QUAD CWA	ED17	medium	15
WPM150SQ	05854	Medium Wallpak 150 Watt Sodium	120/208/240/277	QUAD HX-HPF	ED23-½	medium	15
WPM150S	05855	Medium Wallpak 150 Watt Sodium	120V	R-NPF	ED23-½	medium	12

WALLPACK – LARGE

LAMP INCLUDED

Large wallpacks have a die cast housing with powdercoat finish and a porcelain mogul/medium base socket assembly. One piece stippled aluminum reflector. Heat and shock

resistant borosilicate glass lens, silicone gasketing. Listed for wet location use. Excellent for security and perimeter lighting, tunnels and commercial and industrial applications.



WPL **H** 9" **W** 18.2" **D** 9.4"

CATALOG NO.	UPC CODE	DESCRIPTION	VOLTS	BALLAST	LAMP	BASE	SHIPPING WEIGHT (LBS)
WPL250MHQ	05856	Large Wallpak 250 Watt Metal Halide	120/208/240/277	QUAD CWA	ED28	mogul	25
WPL250SQ	05857	Large Wallpak 250 Watt Sodium	120/208/240/277	QUAD CWA	ED18	mogul	24

WALLPACK – LARGE DEEP



WPLD **H** **W** **D**
 9" 18.2" 12.8"

LAMP INCLUDED

Large Deep wallpacks have a die cast housing with powdercoat finish and a porcelain 4KV mogul socket assembly. Specular aluminum reflector. Heat and shock resistant borosilicate glass lens, silicone gasketing. Listed for wet

location use. Excellent for security and perimeter lighting, tunnels and commercial and industrial applications. Large Deep wallpacks have an extra deep housing for better cooling and longer lasting components.

CATALOG NO.	UPC CODE	DESCRIPTION	VOLTS	BALLAST	LAMP	BASE	SHIPPING WEIGHT (LBS)
WPLD400MHQ	05860	Large Deep Wallpak 400 Watt Metal Halide	120/208/240/277	QUAD CWA	ED37	mogul	26
WPLD250MHQ	05861	Large Deep Wallpak 250 Watt Metal Halide	120/208/240/277	QUAD CWA	ED28	mogul	25
WPLD400SQ	05862	Large Deep Wallpak 400 Watt Sodium	120/208/240/277	QUAD CWA	ED18	mogul	28
WPLD250SQ	05863	Large Deep Wallpak 250 Watt Sodium	120/208/240/277	QUAD CWA	ED18	mogul	25

WALLPACK – SLIMLINE



WPSL **H** **W** **D**
 15.8" 15.8" 7.4"

LAMP INCLUDED

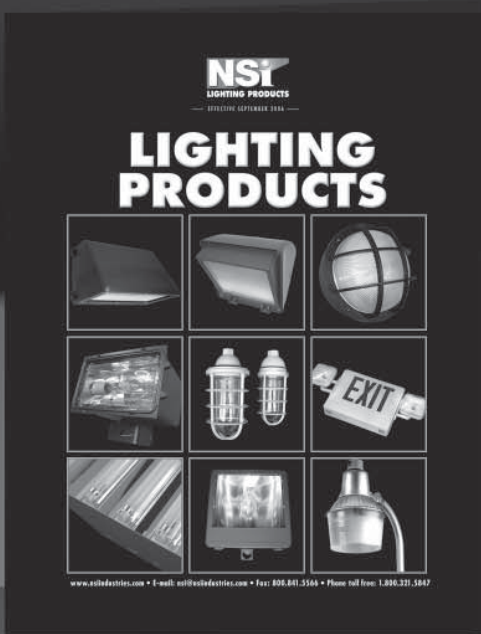
Slimline wallpacks are low profile and easy to install. They feature a die cast housing with a bronze powdercoat finish. The lens is borosilicate glass and meets or exceeds all required thermal

shock testing. The Slimline wallpack is hinged at the front to allow for easy relamping and maintenance. Listed for wet location use.

CATALOG NO.	UPC CODE	DESCRIPTION	VOLTS	BALLAST	LAMP	BASE	SHIPPING WEIGHT (LBS)
WPSL400MHQ	05858	Slimline Wallpak 400 Watt Metal Halide	120/208/240/277	QUAD CWA	BT37	mogul	28
WPSL400SQ	05859	Slimline Wallpak 400 Watt Sodium	120/208/240/277	QUAD CWA	ED18	mogul	30



bringing our experience to **LIGHT**



For years, you have relied on NSi Industries to bring you the best in electrical products for your most important customers.

We now offer that same commitment to unsurpassed service and attention to detail in the lighting products you sell every day. In addition to the basics, we also pledge to focus on light control and energy consumption issues that are important to end users

today; our offering includes a wide variety of fluorescent products and full cutoff fixtures.

NSi delivers thousands of quality electrical products to make life in the field easier and safer – now we bring that experience to light.



Innovative and Competitive. We make a good team.

NSi Industries, LLC • 9730 Northcross Center Dr. • Huntersville, NC 28078
Phone: 800.321.5847 • Fax: 800.841.5566 • Email: nsi@nsiindustries.com • www.nsiindustries.com

HID and Outdoor Lighting

VERSATILE EASY-ADJUSTABLE™ FLOODLIGHTS

APPLICATIONS: ALLOWS FLEXIBILITY IN DISTRIBUTION FOR CAR LOTS,
PARKING AREAS, SECURITY & PERIMETER INSTALLATIONS

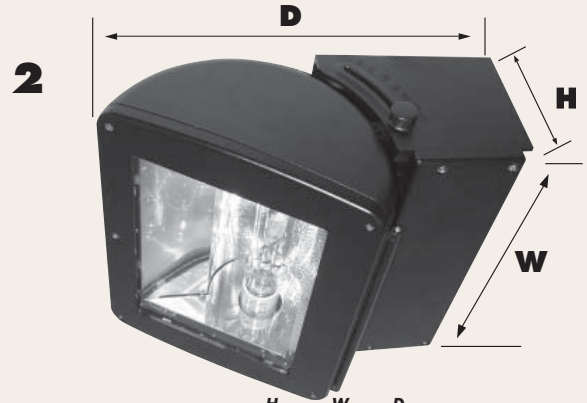
EASY-ADJUSTABLE FLOOD™

LAMP INCLUDED

NSi Easy-Adjustable™ Floods are dual-purpose area lights: a swivel feature, and optional wall mounting or extruded arm for pole mounting, both included. These incredibly versatile floods have IP65 ratings and tool-less entry for easy maintenance. Light can be aimed from 0-30°!



FLA **H** 5.5" **W** 12.8" **D** 16.3"



FLAL **H** 7.5" **W** 16.8" **D** 20"

CATALOG NO.	UPC CODE	FIG. NO.	DESCRIPTION	VOLTS	BALLAST	LAMP	BASE	SHIPPING WEIGHT (LBS)
FLA175MHQ	05929	1	Adjustable flood 175 watt Metal Halide	120/208/240/277	QUAD CWA	ED17	MEDIUM	call for
FLA150SQ	05930	1	Adjustable flood 150 watt Sodium	120/208/240/277	QUAD HX-HPF	ED 23 1/2	MEDIUM	shipping
FLAL400MHQ	05931	2	Large Adjustable flood 400 watt Metal Halide	120/208/240/277	QUAD CWA	ED 37	MOGUL	weight
FLAL400SQ	05932	2	Large Adjustable flood 400 watt Sodium	120/208/240/277	QUAD CWA	ED 23 1/2	MOGUL	estimate

COMING

FLEXIBILITY!

TWO MOUNTING OPTIONS:

- Wall-mount
- Extruded arm



ADVANTAGES: easy-adjustable flood™

- Versatile dual-purpose area light
- IP-65 Rating
- Unique wall-mount feature *or* Extruded mounting arm for pole mounting
- Tool-less entry for easy relamping
- Housing swivels to 30 degrees to allow light to be aimed where needed!

GREAT AIM!
HOUSING SWIVELS
FROM 0-30°!



1000 WATT FLOODLIGHT

LAMP INCLUDED

23" 1000 Watt Floodlights and 16" 400 and 250 Watt Floodlights have heavy duty die cast aluminum housing and durable bronze powder-coat finish. Extra heavy duty slipfitter (bracket mount is available). Fixture has silicone gasketing, stainless steel hardware and a tempered glass lens. Front lens assembly is fully hinged for easy relamping and maintenance. Photocontrol adaptable.



FLH1000 **H** 29" **W** 23.75" **D** 10.25"

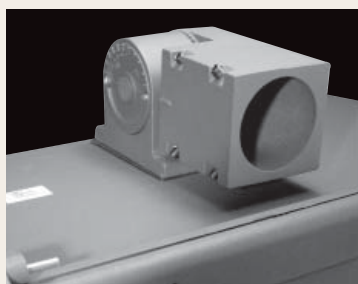
LARGE FLOODLIGHT



FL **H** 17" **W** 16.5" **D** 7.2"

for Wire Guard and Baffle see p. 39
for Safety Cable (recommended) see p.40

CATALOG NO.	UPC CODE	FIG. NO.	DESCRIPTION	VOLTS	BALLAST	LAMP	BASE	SHIPPING WEIGHT (LBS)
FLH1000MHQ	05864	1	1000 Watt Flood Metal Halide	120/208/240/277	QUAD CWA	ED37	mogul	52
FLH1000SQ	05865	1	1000 Watt Flood Sodium	120/208/240/277	QUAD CWA	ED25	mogul	57
FL400MHQ	05866	2	Large Flood 400 Watt Metal Halide	120/208/240/277	QUAD CWA	ED37	mogul	27
FL250MHQ	05867	2	Large Flood 250 Watt Metal Halide	120/208/240/277	QUAD CWA	ED28	mogul	27
FL400SQ	05868	2	Large Flood 400 Watt Sodium	120/208/240/277	QUAD CWA	ED18	mogul	30
FL250SQ	05869	2	Large Flood 250 Watt Sodium	120/208/240/277	QUAD CWA	ED18	mogul	28



TO ENSURE SAFETY:

- NSi Lighting Products *strongly recommends* the use of a safety cable (NSi part no. SAFC) for all pole mounted floodlight fixtures to ensure installer and public safety. See page 41.

LOW PROFILE FLOODLIGHT



FLLP **H** **W** **D**
10.25" 16.25" 10.75"

LAMP INCLUDED

Our Low-Profile floodlight has a die cast housing with powdercoat finish and comes with three piece anodized aluminum reflector, supplying wide beam distribution. High impact

tempered lens. Listed for wet location use. Can be mounted for landscape/facade lighting; bracket or slipfitter adaptable.

for Wire Guard and Glare Shield see page 39

CATALOG NO.	UPC CODE	DESCRIPTION	VOLTS	BALLAST	LAMP	BASE	SHIPPING WEIGHT (LBS)
FLLP400MHQ	05870	Low Profile Flood 400 Watt Metal Halide	120/208/240/277	QUAD CWA	ED37	mogul	25
FLLP250MHQ	05871	Low Profile Flood 250 Watt Metal Halide	120/208/240/277	QUAD CWA	ED28	mogul	24
FLLP175MHQ	05872	Low Profile Flood 175 Watt Metal Halide	120/208/240/277	QUAD CWA	ED28	mogul	20
FLLP400SQ	05873	Low Profile Flood 400 Watt Sodium	120/208/240/277	QUAD CWA	ED18	mogul	27
FLLP250SQ	05874	Low Profile Flood 250 Watt Sodium	120/208/240/277	QUAD CWA	ED18	mogul	25

ROUND BACK FLOODLIGHT



FLRB175&150 **H** **W** **D**
FLRB400 11" 11.2" 8.6"
17.7" 20.3" 13"

LAMP INCLUDED

Round Back Floodlights are constructed of heavy duty die cast aluminum and corrosion resistant hardware. Silicone gasketing, impact resistant tempered glass and anodized aluminum reflector. UL and CUL Listed for

wet location use. Great for use in park and recreational lighting, sports fields and back yards. Easy entry with only two screws and linear hinge; mounts with 1/2" NPT threaded knuckle assembly.

CATALOG NO.	UPC CODE	DESCRIPTION	VOLTS	BALLAST	LAMP	BASE	SHIPPING WEIGHT (LBS)
FLRB175MHQ	05875	Round Back 175 Watt Metal Halide	120/208/240/277	QUAD CWA	ED17	medium	19
FLRB150SQ	05876	Round Back 150 Watt Sodium	120/208/240/277	QUAD HX-HPF	ED17	medium	20
FLRB400MHQ	05877	Round Back 400 Watt Metal Halide	120/208/240/277	QUAD CWA	BT37	mogul	23
FLRB400SQ	05878	Round Back 400 Watt Sodium	120/208/240/277	QUAD CWA	ED18	mogul	26

MEDIUM FLOODLIGHT

LAMP INCLUDED

Our Medium Floodlight has a die cast housing and hinged top frame with textured bronze finish. The aluminum hydroformed reflector is rotatable and

is adjustable for horizontal or vertical lamp positions. Fixture has adjustable 1/2" NPT threaded knuckle with angle indicators to assist in correct aiming.



FLM H 10.25" W 9" D 7.25"

for Wire Guard and Glare Shield see page 39

CATALOG NO.	UPC CODE	DESCRIPTION	VOLTS	BALLAST	LAMP	BASE	SHIPPING WEIGHT (LBS)
FLM70MHQ	05885	Medium Flood 70 Watt Metal Halide	120/208/240/277	QUAD CWA	ED17	medium	10
FLM100MHQ	05886	Medium Flood 100 Watt Metal Halide	120/208/240/277	QUAD CWA	ED17	medium	11
FLM175MHQ	05887	Medium Flood 175 Watt Metal Halide	120/208/240/277	QUAD CWA	ED17	medium	12
FLM70S	05888	Medium Flood 70 Watt Sodium	120V	R-NPF	ED23 1/2	medium	8
FLM100S	05889	Medium Flood 100 Watt Sodium	120V	R-NPF	ED23 1/2	medium	8
FLM70SQ	05922	Medium Flood 70 Watt Sodium	120/208/240/277	QUAD HX-HPF	ED17	medium	11
FLM150SQ	05921	Medium Flood 150 Watt Sodium	120/208/240/277	QUAD HX-HPF	ED17	medium	10

COMPACT FLOODLIGHT

LAMP INCLUDED

Our Compact Floodlight has a die cast housing and lens frame with powdercoat finish and a one piece high impact tempered lens, 1/2" NPT knuckle assembly. The reflector is

stippled for glare reduction and controlled beam distribution. Hinged lens assembly is silicone gasketed to seal out dust and moisture. Listed for wet location use.



FLC H 7.5" W 9" D 7"

CATALOG NO.	UPC CODE	DESCRIPTION	VOLTS	BALLAST	LAMP	BASE	SHIPPING WEIGHT (LBS)
FLC70MHQ	05879	Compact Flood 70 Watt Metal Halide	120/208/240/277	QUAD HX-HPF	ED17	medium	9
FLC100MHQ	05880	Compact Flood 100 Watt Metal Halide	120/208/240/277	QUAD HX-HPF	ED17	medium	9
FLC70S	05881	Compact Flood 70 Watt Sodium	120V	R-NPF	ED23 1/2	medium	7
FLC70SQ	05882	Compact Flood 70 Watt Sodium	120/208/240/277	QUAD HX-HPF	ED23 1/2	medium	10
FLC150SQ	05883	Compact Flood 150 Watt Sodium	120/208/240/277	QUAD HX-HPF	ED23 1/2	medium	12
FLC42FL	05884	Compact Flood 42 Watt Fluorescent	120V	ELECTRONIC	PLC	medium	8

FLUORESCENT FLOODLIGHTS



FLF42 **H** 7.5" **W** 9" **D** 6"

LAMP INCLUDED

NSi's die cast Fluorescent Floodlight has a bronze powdercoat finish with silicone gasketed tempered glass lens and frame. High 6500K lamp gives a

metal halide-like color rendering. Mounts with fully adjustable 1/2" NPT threaded knuckle.

energy saving
FLUORESCENT!



FLF26NM **H** 4.75" **W** 9.25" **D** 4.6"

LAMPS INCLUDED

NSi's non-metallic Fluorescent Floodlight features twin 13 Watt fluorescent lamps, fully silicone gasketed

lens and frame. Mounts with fully adjustable 1/2" NPT threaded knuckle.

energy saving
FLUORESCENT!

CATALOG NO.	UPC CODE	FIG. NO.	DESCRIPTION	VOLTS	BALLAST	LAMP	SHIPPING WEIGHT (LBS)
FLF42	05891	1	Fluorescent Flood 42 Watt Die Cast	120V	ELECTRONIC	PLC	5
FLF26NM	05890	2	Fluorescent Flood 26 Watt Non-metallic	120V	ELECTRONIC	PLC	3

INCANDESCENT FLOODLIGHT AND ACCESSORIES



PHNM
BACKPLATE DIAMETER
5.25"

The Non-metallic Par Holder **(1)** features an oversized backplate designed specially to cover gaps where cutouts for boxes are too big. The extra deep backplate also fits over a flushmounted pancake box to provide a good fit and appearance. Both par holders swivel side to side and up and down and can be securely locked.



PHS
H 2.8"
W 2.8"
D 6.2"

The PHS250 **(2)** is a heavy duty par holder rated for 250 Watts, featuring 3 gaskets and a locking ring to ensure the lamp base and socket are protected from the elements. The 1/2" NPT knuckle has aiming indicators and locking ring to hold the fixture in position.



P16SQBL
L 6.7"
DIA 4"

NSi's Par 16 70W max Lampholder **(3)** is cast aluminum with a unique square-shaped integral visor. Ideal for landscape, facade and small controlled area flood or spot lighting.

CATALOG NO.	UPC CODE	FIG. NO.	DESCRIPTION	LAMP TYPE	SHIPPING WEIGHT
PHNM300	05892	1	300 Watt Nonmetallic Twin Par Holder	reflector	13.5
PHS250	05893	2	250 Watt Single Par Holder	reflector	.6
P16SQBL	05357	3	Square Visor Par 16 75 Watt Black	"A" lamp	2

QUARTZ BULLETS - SINGLE AND DUAL

LAMPS INCLUDED

Quartz Bullets feature solid die cast aluminum construction, high impact resistant glass lens, aluminum reflector and corrosion resistant hardware. UL and CUL listed for wet location use. Powerful and compact, these floods are excellent for lighting small outdoor areas.



QBS
H 3.5"
W 3.3"
EXT 3.9"



QBD100
H 5.75"
W 5.75"
EXT 4.6"
QBD200
H 9.25"
W 5.75"
EXT 5.25"

CATALOG NO.	UPC CODE	FIG. NO.	DESCRIPTION	VOLTS	SHIPPING WEIGHT
QBS50BL	05904	1	Quartz Bullet Single 50 Watt Black	120V	2
QBD100W	05905	2	Quartz Bullet Dual 50 Watt White	120V	3.5
QBD100B	05906	2	Quartz Bullet Dual 50 Watt Bronze	120V	3.5

CUBE QUARTZ FLOODLIGHT

LAMP INCLUDED

Versatile multi-position quartz fixture for controlled aiming. This unique cube uses a bayonet based 150W quartz lamp and a refractor assembly designed to

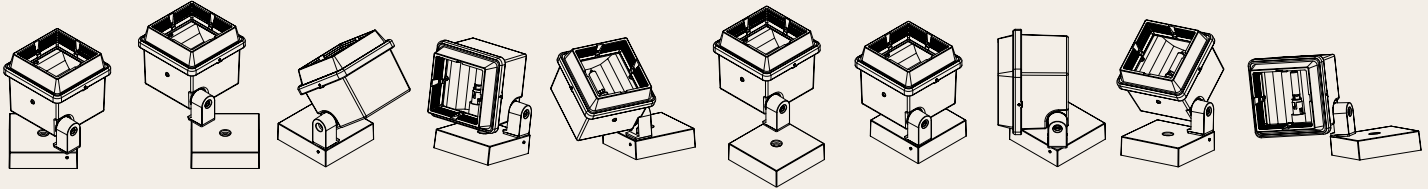
place light exactly where you need it. High temp automotive silicone sealant ensures a leak-proof enclosure. For outdoor wall use only.



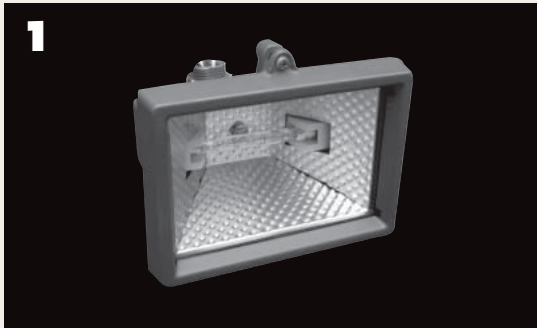
QFCU H 5" W 5" D 6.75"

CATALOG NO.	UPC CODE	FIG. NO.	DESCRIPTION	SHIPPING WEIGHT (LBS)
QFCU150B	05903	4	150 Watt Cube Quartz	3

MULTIPLE POSITIONS FOR CUBE QUARTZ FLOOD



QUARTZ FLOODLIGHT



QF150 H 3.9" W 5.4" D 4.7"



QF300/500 H 7.5" W 8.9" D 3.8"
INCLUDES TWO LAMPS – YOU CHOOSE WATTAGE!



QF1500 H 8.7" W 15.6" D 6.4"

LAMPS INCLUDED

NSi Lighting's Quartz halogen Floodlights feature solid one piece die cast aluminum construction, high impact resistant tempered glass lens, aluminum reflector and corrosion resistant hardware. Silicone rubber gasketing is included to prevent leakage from outside. UL and CUL listed for wet location use. 150 Watt is perfect for lighting small outdoor areas; the others are excellent for general purpose floodlighting.

CATALOG NO.	UPC CODE	FIG. NO.	DESCRIPTION	VOLTS	SHIPPING WEIGHT (LBS)
QF150B	05899	1	150 Watt Quartz Flood Bronze W/lamp	120V	1.7
QF300-500B	05901	2	300 and 500 W Quartz Flood Bronze W/lamp	120V	3
QF1500B	05902	3	1500 Watt Quartz Flood Bronze W/lamp	240V	7.0

ENTRY CYLINDERS

LAMP INCLUDED

NSi offers the EL Series Entry Cylinder in sodium or fluorescent. Features impact and corrosion resistant polycarbonate housing and polycarbonate lens. The lens is engineered to diffuse the light to properly light entryways

without glare. Lens locks in place with an allen set screw to resist tampering. 26W 4100K fluorescent lamp or 50W sodium are included.

AVAILABLE IN
energy saving
FLUORESCENT!
EL13FL H 9" W 5" D 7"



CATALOG NO.	UPC CODE	DESCRIPTION	VOLTS	BALLAST	LAMP	SHIPPING WEIGHT (LBS)
EL26FL	05917	Entry Cylinder 26w Fluorescent	120V	ELECTRONIC	PLC	5
EL50S	05918	Entry Cylinder 50 Watt Sodium	120V	R-NPF	ED17	6

LAMP INCLUDED

The 13 Watt Entry Cylinder is ideal for doorways: housing is die cast aluminum and comes with a bead blasted finish. Easy to install with single post threaded rope. The ribbed polycarbonate globe is gasketed and has a

twist-off design. Can be painted to match surrounding color scheme. 13W 4100K lamp is included. CSA listed for wet location use.

energy saving
FLUORESCENT!
EL H 8.9" W 5.1" D 6.9"



CATALOG NO.	UPC CODE	DESCRIPTION	VOLTS	BALLAST	LAMP	SHIPPING WEIGHT (LBS)
EL13FL	05916	Entry Cylinder 13 Watt NPF	120V	ELECTRONIC	PLC	4

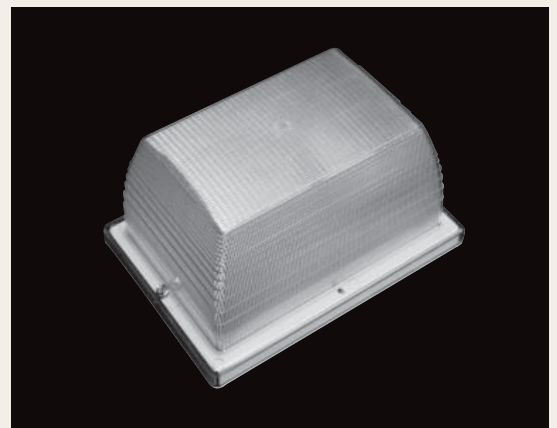
VANDAL RESISTANT 5 X 8 ENTRY LIGHT

Our 5 x 8 Vandal Resistant Entry Light is available in incandescent or fluorescent with clear polycarbonate lens. Includes steel pan, gasket and hard-

ware, socket and bracket. Incandescent model includes foil and fiber pad. Can be ceiling/canopy or wall mounted.

VRM13FL: **LAMP INCLUDED**

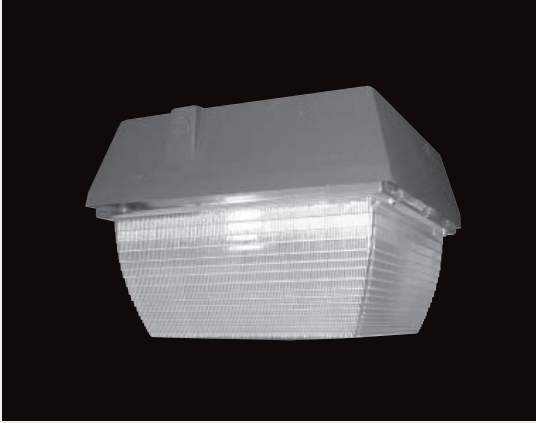
VRM75I: **LAMP NOT INCLUDED**



VRM H 5.5" W 7.75" D 4.25"

CATALOG NO.	UPC CODE	DESCRIPTION	VOLTS	BALLAST	LAMP	SHIPPING WEIGHT (LBS)
VRM75I	05919	Mini VR 5x8 75 Watt Incandescent (Clear Lens)	120V	n/a	A	2
VRM13FL	05920	Mini VR 5x8 13 Watt Fluorescent (Clear Lens)	120V	ELECTRONIC	PLC	2

SMALL VANDAL RESISTANT



LAMP INCLUDED

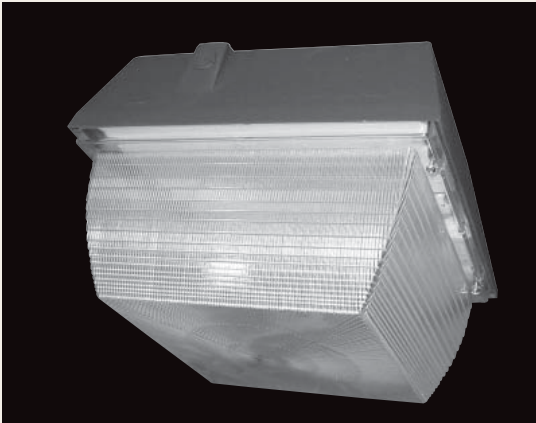
Our 8 x 8 Small Vandal Resistant Light has die cast housing, chromate conversion coating and textured bronze finish and corrosion resistant stainless steel hardware. Polycarbonate lens,

silicone gasketing and medium socket with white reflector. 1/2" coin plugs are provided for surface wiring.

VRS **W** **W** **D**
 9" 9" 7.25"

CATALOG NO.	UPC CODE	DESCRIPTION	VOLTS	BALLAST	LAMP	BASE	SHIPPING WEIGHT (LBS)
VRS70MHQ	05911	Small Vandal Resistant 8x8 Square 70 Watt Metal Halide	120/208/240/277	QUAD HX-HPF	ED17	medium	10
VRS70S	05912	Small Vandal Resistant 8x8 Square 70 Watt Sodium	120V	R-NPF	ED23-1/2	medium	8

LARGE VANDAL RESISTANT



LAMP INCLUDED

Our 12 x 12 Large Vandal Resistant Light has die cast housing, chromate conversion coating and textured bronze finish and corrosion resistant stainless steel hardware.

Polycarbonate lens, silicone gasketing and medium socket with white reflector. 1/2" coin plugs are provided for surface wiring.

VRS **W** **W** **D**
 12.3" 12.3" 8.6"

CATALOG NO.	UPC CODE	DESCRIPTION	VOLTS	BALLAST	LAMP	BASE	SHIPPING WEIGHT (LBS)
VRS175MHQ	05913	Large Vandal Resistant 12x12 Square 175 Watt Metal Halide	120/208/240/277	QUAD HX-HPF	ED17	medium	15
VRS100MHQ	05914	Large Vandal Resistant 12x12 Square 100 Watt Metal Halide	120/208/240/277	QUAD HX-HPF	ED17	medium	14
VRS150S	05915	Large Vandal Resistant 12x12 Square 150 Watt Sodium	120	R-NPF	ED23-1/2	medium	12

GARAGE LIGHTER 

LAMP INCLUDED

NSi's Garage Lighter is die cast aluminum with textured bronze finish and corrosion resistant stainless steel hardware. Coin plugs are on sides and back for universal wiring. Extended

vandal resistant polycarbonate lens with gasket, reflector, and medium base vertical lamp mount.



GL **H** 11.25" **DIA** 15"

CATALOG NO.	UPC CODE	DESCRIPTION	VOLTS	BALLAST	LAMP	BASE	SHIPPING WEIGHT (LBS)
GL175MHQ	05907	Garage Lighter 175 Watt Metal Halide	120/208/240/277	QUAD CWA	ED17	medium	18
GL150SQ	05908	Garage Lighter 150 Watt Sodium	120/208/240/277	QUAD HX-HPF	ED23 ½	medium	19

GLASS GARAGE LIGHTER 

LAMP INCLUDED

This stylish Glass Garage Lighter has hinged, removeable borosilicate glass, and powder coated finish. A one piece anodized aluminum reflector provides high efficiency; UL and

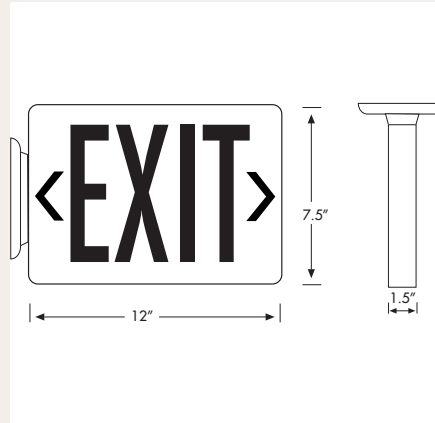
CUL listed for wet location use. Great for garages, loading docks and recreation areas.



GLG **H** 11.25" **DIA** 15"

CATALOG NO.	UPC CODE	DESCRIPTION	VOLTS	BALLAST	LAMP	BASE	SHIPPING WEIGHT (LBS)
GLG175MHQ	05909	Garage Lighter Glass 175 Watt Metal Halide	120/208/240/277	QUAD CWA	ED17	medium	21
GLG150SQ	05910	Garage Lighter Glass 150 Watt Sodium	120/208/240/277	QUAD HX-HPF	ED17	medium	23

LED EXIT LIGHT

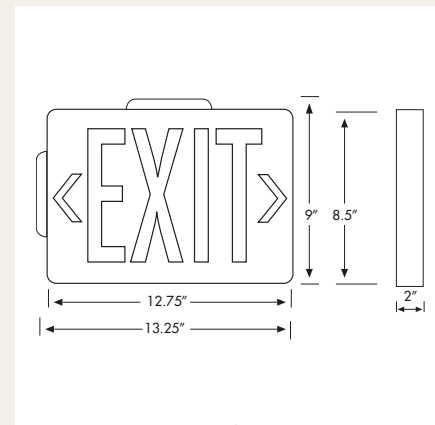


NSI's low profile LED exit lights have fully automatic operation at 120 or 277 VAC with 25+ years LED lamp life. LED exit lights have a universal mounting canopy for side or top installation. Injection-molded V-O flame retardant high-impact thermoplastic housing in a pleasing neutral color paired with a low profile design and excellent energy savings.

CATALOG NO.	UPC NO.	TYPE	LETTERING	HOUSING	SHIPPING WEIGHT (LBS)
EXLRW	05215	AC	red	white	3
EXLGW	05216	AC	green	white	3
EXLRB	05217	AC	red	black	3
EXLGB	05218	AC	green	black	3
EXLBURW	05219	battery backup	red	white	3
EXLBUGW	05220	battery backup	green	white	3
EXLBURB	05221	battery backup	red	black	3
EXLBUGB	05222	battery backup	green	black	3

NOTE: Remote Capable version available – call for special order quote.

DIE-CAST ALUMINUM LED EXIT LIGHT



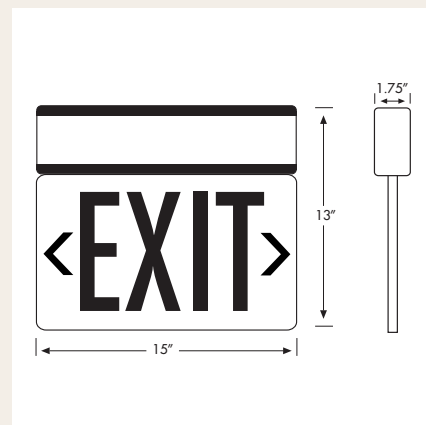
NSI's die-cast aluminum LED exit lights have fully automatic operation at 120 or 277 VAC, in AC only or battery units. Die-cast LED exit lights have a universal mounting canopy for side or top installation. Excellent energy savings of LED in a curved design with universal K/O chevrons. Face plate is brushed aluminum.

NOTE: Available versions: Self-diagnostic, white or black Powdercoated – call for special order quote.

CATALOG NO.	UPC NO.	TYPE	NO. OF FACES	LETTERING	HOUSING	SHIPPING WEIGHT (LBS)
DEXL1RB	05239	AC	one	red	black	4.7
DEXL2RB	05240	AC	two	red	black	5.7
DEXL1GB	05241	AC	one	green	black	4.7
DEXL2GB	05242	AC	two	green	black	5.7
DEXLBU1RB	05243	battery backup	one	red	black	4.7
DEXLBU2RB	05244	battery backup	two	red	black	5.7
DEXLBU1GB	05245	battery backup	one	green	black	4.7
DEXLBU2GB	05246	battery backup	two	green	black	5.7
DEXFPRB	05247	plate	n/a		red on aluminum	1
DEXFPGB	05248	plate	n/a		green on aluminum	1

EDGE LIT LED EXIT LIGHT

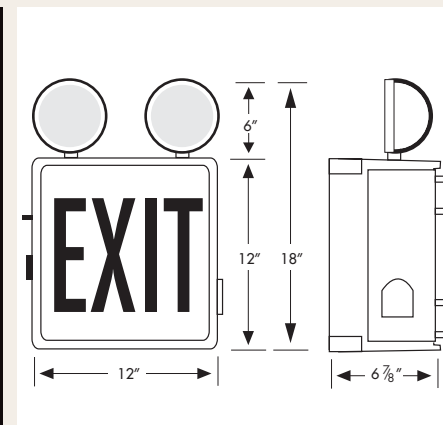
NSI's edge-lit LED exit lights combine a compact, low profile design engineered for an enhanced look with the low energy consumption of LED lighting. 120/277 volt operation. Install directional indicators in the field, standard AC and emergency units available. Aluminum/acrylic housing.



CATALOG NO.	UPC NO.	TYPE	FACE	LETTERING	BATTERY	SHIPPING WEIGHT (LBS)
SURFACE						
ELXBU1R	05249	battery backup	one	red	6V	6
ELXBU1G	05250	battery backup	one	green	6V	6
ELX1R	05253	AC	one	red		5.25
ELX1G	05254	AC	one	green		5.25
ELX2G	05255	AC	two	green		5.25
RECESSED						
RELXBU1R	05256	battery backup	one	red	6V	7.4
RELXBU1G	05257	battery backup	one	green	6V	7.4
RELX1R	05260	AC	one	red		6.9
RELX2R	05261	AC	two	red		6.9
RELX1G	05262	AC	one	green		6.9
RELX2G	05263	AC	two	green		6.9

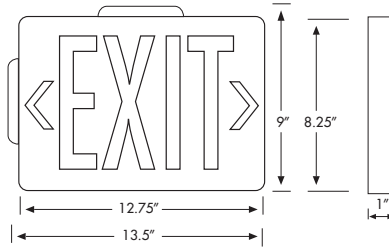
WET LOCATION LED EXIT LIGHT / TWO HEAD EMERGENCY UNIT

ABS, corrosion resistant UV stabilized enclosures meet NFPA, NEC, OSHA, NEC and local and state codes, making these energy-saving wet location LED exit lights great for corrosive or damaging environments. Universal 120/277 VAC operation with removable directional indicators and an 80-year light source life expectancy.



CATALOG NO.	UPC NO.	TYPE	LETTERING	HOUSING	BATTERY	SHIPPING WEIGHT (LBS)
EXWLRW	05264	AC	red	white		7.4
EXWLGW	05265	AC	green	white		7.4
EXWLBURW	05268	battery backup	red	white	6V	7.6
EXWLBUGW	05269	battery backup	green	white	6V	7.6
EMWL26RW	05272	2-head emergency light	red	white	6V	9

SELF LUMINOUS EXIT LIGHT 



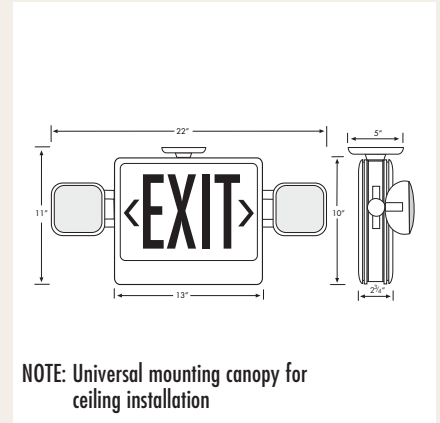
No electricity, batteries, or maintenance! NSi offers the most reliable tritium exit lighting with simple installation, concealed mounting and no external energy source needed! Weatherproof and even explosion proof, these self-luminous exit lights have letter-shaped light tubes delivering trouble-free and cost-free light. Suitable for floor proximity mounting. Your only cost for 10-20 years is the purchase of this fixture!

CATALOG NO.	UPC NO.	TYPE	FACE		HOUSING	YEARS	SHIPPING WEIGHT (LBS)
			NO.	COLOR			
EXT110RW	05273	tritium	one	red	white	10	3
EXT210RW	05274	tritium	two	red	white	10	3
EXT120RW	05275	tritium	one	red	white	20	3
EXT220RW	05276	tritium	two	red	white	20	3
EXT110RB	05277	tritium	one	red	black	10	3
EXT210RB	05278	tritium	two	red	black	10	3
EXT120RB	05279	tritium	one	red	black	20	3
EXT220RB	05280	tritium	two	red	black	20	3

NOTE: NYC approved lighting is available – call for special order quote.

COMBINATION LED INCANDESCENT EXIT LIGHT 

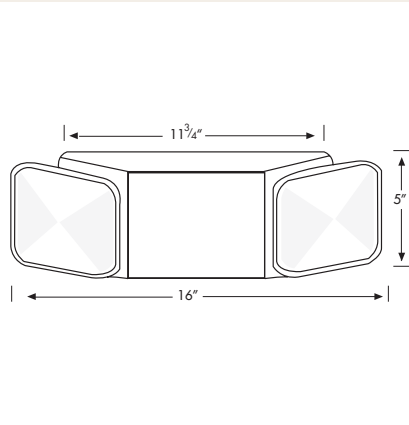
Our combination LED emergency light provides excellent energy savings and the LED lamp life of 25+ years. Automatic LVD (low voltage disconnect) and universal transformer for 120 or 277 VAC. Injection-molded V-O flame retardant high-impact thermoplastic housing and a 6 volt pure lead maintenance free battery. Two fully adjustable glare free lighting heads in a compact, modern design.



CATALOG NO.	UPC NO.	FACE	LETTERING	HOUSING	REMOTE CAPABLE?	SHIPPING WEIGHT (LBS)
EEL2RW	05227	two	red	white	no	9
EEL2RWRM	05228	two	red	white	yes	10
EEL2RB	05229	two	red	black	no	9
EEL2RBRM	05230	two	red	black	yes	10
EEL2GW	05235	two	green	white	no	10
EEL2GWRM	05236	two	green	white	yes	10
EEL2GB	05237	two	green	black	no	9
EEL2GBRM	05238	two	green	black	yes	10

NOTE: Self-diagnostic and remote capable options are available for this fixture – call for special order quote.

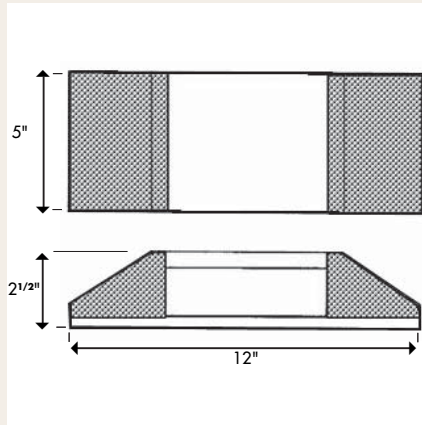
TWIN HEAD EMERGENCY LIGHT 



NSi twin-head emergency lighting unit gives a low profile appearance with automatic LVD (low voltage disconnect) and universal transformer for 120 or 277 VAC. Universal mounting plate with quick connect for labor saving installation. Injection-molded V-O flame retardant high-impact thermoplastic housing and a 6 volt pure lead maintenance free battery. Environmentally-coated solid state charger. Listed for damp location use.

CATALOG NO.	UPC NO.	BATTERY	HOUSING	SOURCE	LAMP	SHIPPING WEIGHT (LBS)
EMTW	05281	6 Volt	white		2 x 5.4W	4.25
EMTWRM	05283	6 Volt	white	remote capable	2 x 5.4W	4.5
EMTB	05284	6 Volt	black		2 x 5.4W	4.25
EMTBRM	05286	6 Volt	black	remote capable	2 x 5.4W	4.5
EMTWMR16	05287	6 Volt	white	MR16	2 x 5.4W	4.25

FIXED OPTICS EMERGENCY LIGHT 

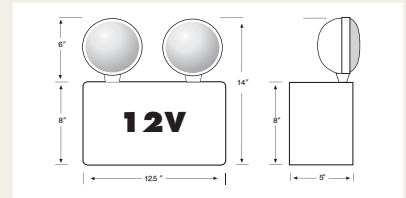
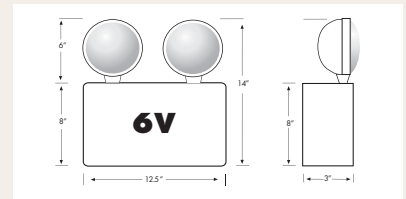


NSi's fixed optics emergency light gives fully automatic operation with automatic LVD (low voltage disconnect) and universal transformer for 120 or 277 VAC. Injection-molded V-O flame retardant high-impact thermoplastic housing and a 6 volt premium grade, pure lead, maintenance free battery. Compact, low profile design in pleasing neutral finish with environmentally-coated solid state charger.

CATALOG NO.	UPC NO.	BATTERY	HOUSING	LAMP	SHIPPING WEIGHT (LBS)
EMFW	05288	6 Volt	white	2 x 5.4W	3
EMFB	05920	6 Volt	black	2 x 5.4W	3

HEAVY DUTY EMERGENCY LIGHT 

Our heavy duty emergency lighting unit has automatic LVD (low voltage disconnect) and universal transformer for 120 or 277 VAC. This heavy duty light comes standard with two fully adjustable glare-free lighting heads and side and top conduit K/Os. 6 volt premium grade, pure lead, maintenance free batteries included with 10 year life expectancy. Remote capability and easy installation.



CATALOG NO.	UPC NO.	REMOTE CAPACITY	BATTERY	VOLTS	LAMP	SHIPPING WEIGHT (LBS)
EMHD506	05292	50 watt	6 Volts	120/277		13 7.5W
EMHD5012	05293	50 watt	12 Volts	120/277		13 9W
EMHD1006	05294	100 watt	6 Volts	120/277		18 7.5W
EMHD10012	05295	100 watt	12 Volts	120/277		18 9W

REMOTE HEADS 



CATALOG NO.	UPC NO.	FIG. NO.	WATTS	VOLTS	SHIPPING WEIGHT (LBS)
EMRH254	05303	1	5.4	two 6 volt	1
EMRH154	05304	2	5.4	one 6 volt	0.7
EMRH172	05305	3	7.2	one 6 volt	1
EMRHMR161	05306	4	5	one 6 volt	0.7
EMRHMR162	05307	4	5	two 6 volt	1
EMHDWL	05296	5	2 x 7.2 watt (no remote)	6 volt	1.5
EMHDWLRC	05297	5	2 x 7.2 watt	6 volt	1.5

ACCESSORIES 



CATALOG NO.	UPC NO.	FIG. NO.	DESCRIPTION	SHIPPING WEIGHT (LBS)
ARETROHW	05298	1	LED Retrofit Kit RED, hardwire	0.25
ARETROKIT	05299	1	LED Retrofit Kit RED w/adapters to fit candelabra, intermediate and DC bayonet	0.25
AEEPSH	05300	2	Polycarbonate Shield for exits & emergency unit	1.7
AEEWG	05301	3	Wire Guard for exits & emergency unit	1.1
AEEWG3	05302	not shown	Wire Guard for combo exits & emergency unit	2.2

VAPORTITE PENDANT, BOX AND WALL LIGHTING 

NSi Vaportite vapor proof lighting has die cast aluminum housing with repaintable textured grey powdercoat finish. Vapor proof lights have screw-on guards, fully gasketed tempered glass globe, and porcelain medium base socket.

NSi Vaportite Lights are available in pendant, box, and wall styles, as shown below. Box and Wall mounts include weather-proof box. UL listed for wet location use.

VAPORTITE PENDANT LIGHT



CATALOG NO.	UPC CODE	DESCRIPTION	LAMP	SHIPPING WEIGHT (LBS)
VTP20012	05308	Pendant 200w 1/2" Vaportite	Incandescent	2.5
VTP20034	05309	Pendant 200w 3/4" Vaportite	Incandescent	2.5
VTP30012	05310	Pendant 300w 1/2" Vaportite	Incandescent	5
VTP30034	05311	Pendant 300w 3/4" Vaportite	Incandescent	5

VTP2 **H** **W** **D**
 9.75" 4.25" 4.25"

VTP3 **H** **W** **D**
 11.75" 5.6" 5.6"

VAPORTITE BOX LIGHT



CATALOG NO.	UPC CODE	DESCRIPTION	LAMP	SHIPPING WEIGHT (LBS)
VTB20012	05312	Box 200w 1/2" Vaportite	Incandescent	3.2
VTB20034	05313	Box 200w 3/4" Vaportite	Incandescent	3.2
VTB30012	05314	Box 300w 1/2" Vaportite	Incandescent	5
VTB30034	05315	Box 300w 3/4" Vaportite	Incandescent	5

VTB2 **H** **W** **D**
 9.75" 4.25" 4.25"

VTB3 **H** **W** **D**
 11.75" 5.6" 5.6"

VAPORTITE WALL LIGHT



CATALOG NO.	UPC CODE	DESCRIPTION	LAMP	SHIPPING WEIGHT (LBS)
VTW20012	05316	Wall 200w 1/2" Vaportite	Incandescent	5
VTW20034	05317	Wall 200w 3/4" Vaportite	Incandescent	5
VTW30012	05318	Wall 300w 1/2" Vaportite	Incandescent	6
VTW30034	05319	Wall 300w 3/4" Vaportite	Incandescent	6

VTB2 **H** **W** **D**
 12.5" 4.25" 7.2"

VTB3 **H** **W** **D**
 14.5" 5.6" 7.5"

VAPORTITE FLUORESCENT LIGHT 

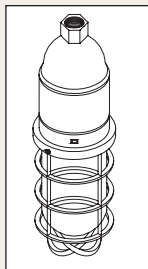
LAMPS INCLUDED

NSi Vaportite Fluorescent vapor proof lighting has die cast aluminum housing with repaintable textured incandescent powdercoat finish. Vapor proof fluorescent lights have ballast box with fluorescent socket plate, fully gasketed

tempered glass globe, and porcelain medium base socket. UL listed for wet location use. Box and Wall mounts include weather-proof box.

VAPORTITE FLUORESCENT PENDANT LIGHT

CATALOG NO.	UPC CODE	DESCRIPTION	BALLAST	LAMP	SHIPPING WEIGHT (LBS)
VTP21213F	05320	½" 200 Series Pendant 13 Watt Fluorescent With Frosted Glass	ELECTRONIC	PLC	3.5
VTP23413F	05321	¾" 200 Series Pendant 13 Watt Fluorescent With Frosted Glass	ELECTRONIC	PLC	3.5



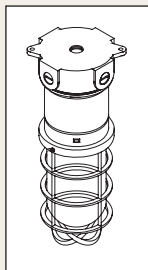
energy saving
FLUORESCENT!

VTP-F *H* 15.25" *W* 4.25" *D* 4.25"



VAPORTITE FLUORESCENT BOX LIGHT

CATALOG NO.	UPC CODE	DESCRIPTION	BALLAST	LAMP	SHIPPING WEIGHT (LBS)
VTB21213F	05322	½" 200 Series Box 13 Watt Fluorescent With Frosted Glass	ELECTRONIC	PLC	4.2
VTB23413F	05323	¾" 200 Series Box 13 Watt Fluorescent With Frosted Glass	ELECTRONIC	PLC	4.2



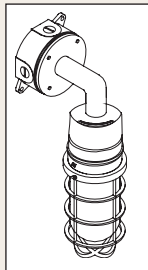
energy saving
FLUORESCENT!

VTB-F *H* 14.8" *W* 4.25" *D* 4.25"



VAPORTITE FLUORESCENT WALL LIGHT

CATALOG NO.	UPC CODE	DESCRIPTION	BALLAST	LAMP	SHIPPING WEIGHT (LBS)
VTW21213F	05324	½" 200 Series Wall 13 Watt Fluorescent With Frosted Glass	ELECTRONIC	PLC	5
VTW23413F	05325	¾" 200 Series Wall 13 Watt Fluorescent With Frosted Glass	ELECTRONIC	PLC	5



energy saving
FLUORESCENT!

VTW-F *H* 18" *W* 4.25" *D* 7.2"



VAPORTITE SHADES 



1
SH H 5" DIA 15.8"



2
ASH H 7" DIA 12"

Straight and angled shades for NSi Vaportite Lighting in stamped aluminum, repaintable grey powdercoat finish.

(Shown with 300W globe and wire guard – not included)

CATALOG NO.	UPC CODE	FIG. NO.	DESCRIPTION	SHIPPING WEIGHT (LBS)
SH200	05326	1	Shade For 200w Vaportite – White Underside – M/C 6	2
SH300	05327	1	Shade For 300w Vaportite – White Underside – M/C 6	2
ASH200	05328	2	Angled Shade For 200 Watt Vaportite	1.5
ASH300	05329	2	Angled Shade For 300 Watt Vaportite	1.2

VAPORTITE WIRE GUARD 



1
WGS EXT 3.8" DIA 18.8" (Shown on SH200)



2
WGAS EXT 2.6" DIA 12" (Shown on ASH200)

Stainless steel wire guards to fit straight and angled shades for NSi Vaportite Lighting.

CATALOG NO.	UPC CODE	FIG. NO.	DESCRIPTION	SHIPPING WEIGHT (LBS)
WGS100	05330	1	Wire Guard For Straight Shade Vaportite	1
WGAS 200	05331	2	Wire Guard For Angled Shade Vaportite	1

VAPORTITE FROSTED GLASS

NSi Vaportite Lights come with heat treated clear glass, below we offer frosted glass globes.

CATALOG NO.	UPC CODE	DESCRIPTION	SHIPPING WEIGHT (LBS)
FG200	05332	Frosted Glass 200 Watt Vaportite	1
FG300	05333	Frosted Glass 300 Watt Vaportite	2



	H	DIA
200W	5.5"	3.2"
300W	7"	4.2"

VAPORTITE COMBO BALL SWIVEL 

Swivel pendant mount for angled or straight ceilings for mount to standard electrical box. Ball allows fixture to hang straight. Fits 3/4" conduit, comes with 3/4" to 1/2" reducer bushing.

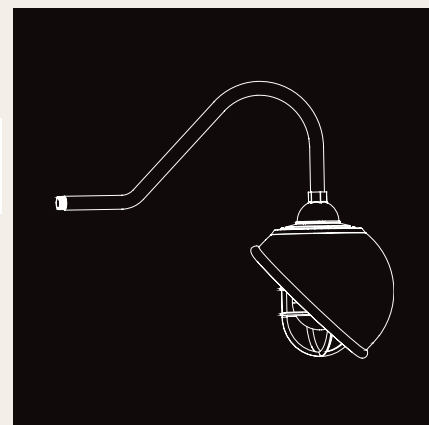
CATALOG NO.	UPC CODE	DESCRIPTION	SHIPPING WEIGHT (LBS)
BSM1234	05334	Combo 1/2" & 3/4" Ball Swivel Vaportite	1.



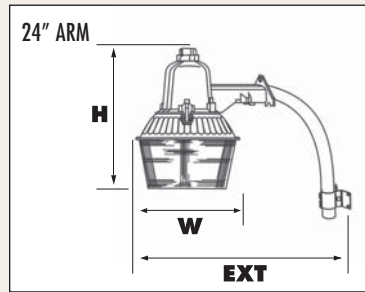
VAPORTITE COWL ARM AND DOWNRODS

Vaportite Lighting Cowl Arm for 1/2" steel conduit; repaintable grey powdercoat finish.

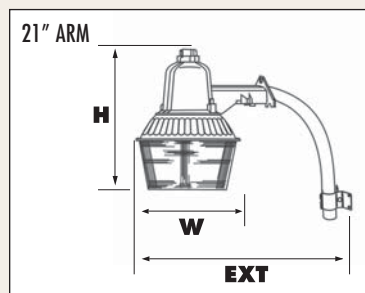
CATALOG NO.	UPC CODE	DESCRIPTION	SHIPPING WEIGHT (LBS)
CA112	05335	Cowl Arm Vaportite	3
DR1812	05336	18" Downrod 1/2" – Vaportite	1
DR3612	05337	36" Downrod 1/2" – Vaportite	2
DR1834	05338	18" Downrod 3/4" – Vaportite	1
DR3634	05339	36" Downrod 3/4" – Vaportite	2



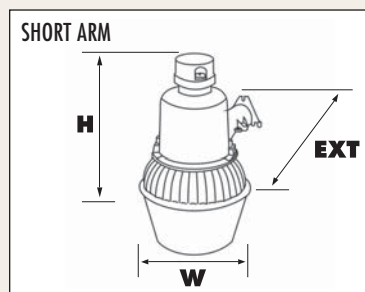
DUSK TO DAWN LIGHTS 



DTONE 24" **H** 17" **W** 12" **EXT** 21.5"



DTD 21" **H** 17" **W** 12" **EXT** 19.5"



DTD-SA **H** 17" **W** 12" **EXT** 14"

LAMPS INCLUDED

NSi's Security Lighting offering includes dusk-to-dawn lighting for perimeter, roadway and security lighting; in die cast aluminum housing with mill finish and UV-stabilized acrylic. Available with 24" arm (NEMA), 21" arm and short arm; all with mounting hardware included. Lampholder is UL approved E-39, 4KV. Excellent for parking lot and off-street lighting, entrances, ways and other general purpose lighting applications.

CATALOG NO.	UPC CODE	FIG. NO.	DESCRIPTION	VOLTS	BALLAST	LAMP	BASE	SHIPPING WEIGHT (LBS)
DTDNE175MV24	05340	1	NEMA Dusk To Dawn 175 Watt Mercury Vapor with 24" arm	120V	HX-WPF	ED28	mogul	18
DTDNE150S24	05341	1	NEMA Dusk To Dawn 150 Watt Sodium with 24" arm	120V	R-NPF	ED23.5	mogul	18
DTD175MV21	05342	2	Dusk To Dawn 175 Watt Mercury Vapor with 21" arm	120V	HX-WPF	ED28	mogul	16
DTD150S21	05343	2	Dusk To Dawn 150 Watt Sodium with 21" arm	120V	R-NPF	ED23.5	mogul	16
DTD175MVSA	05344	3	Dusk To Dawn 175 Watt Mercury Vapor with Short Arm	120V	HX-WPF	ED28	mogul	14
DTD150SSA	05345	3	Dusk To Dawn 150 Watt Sodium with Short Arm	120V	R-NPF	ED23.5	mogul	14

MOTION LIGHTS 

Motion Lighting in die cast or polycarbonate housing, and 180° view sensors. For use in garages, backyard and more. In bronze or white with automatic motion detector and dusk to dawn operation. Head is fully adjustable for direction and sensitivity.



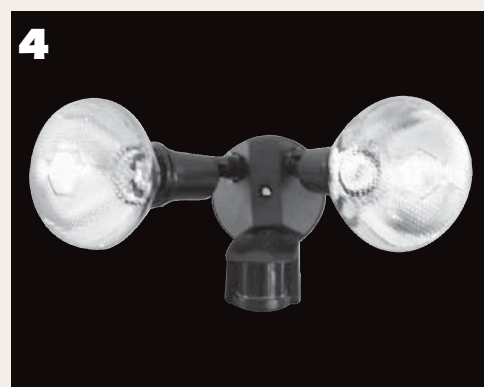
1
MSQ50 H 5.5" W 4.3" EXT 7.9"



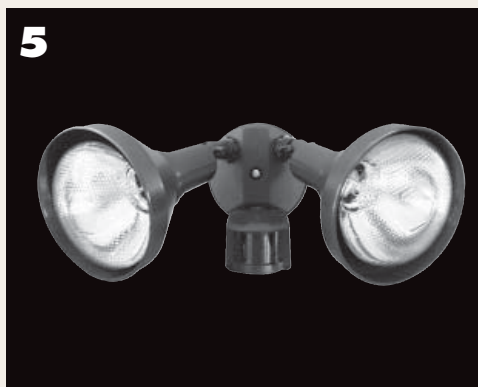
2
MSQ250 H 11.2" W 10" EXT 7.9"



3
MSQ2200 H 10" W 11.2" EXT 7.9"



4
MSPAR H 9" W 10.6" EXT 7.9"



5
MSSP H 10.75" W 16.9" EXT 7.9"



6 & 7
MSQ500W H 8.6" W 6.5" EXT 9.5" MSQ150W H 7.9" W 5.75" EXT 7"

CATALOG NO.	UPC CODE	FIG. NO.	DESCRIPTION	VOLTS	LAMP	SHIPPING WEIGHT (LBS)
MSQ50B	05346	1	Motion 50 Watt Bullet Bronze	120V	included	2.4
MSQ250B	05347	2	Motion 2 x 50 Watt Bullet Bronze	120V	included	2.5
MSQ2200B	05348	3	Motion 2 x 100 Watt Bullet Bronze	120V	included	3
MSPAR2150B	05349	4	Motion 2 x 150 Watt Par 38 Bronze	120V	not included	1.75
MSSP2150B	05350	5	Motion 2 x 150 Watt Sheilded Par 38 Bronze	120V	not included	3.6
MSQ500W	05352	6	Motion 500 Watt Quartz White	120V	included	2.3
MSQ150W	05351	7	Motion 150 Watt Quartz White	120V	included	3

BULLETS 



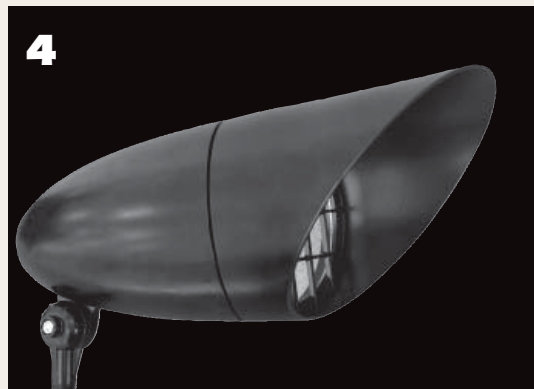
1
P38BUL L 7.1" DIA 5.4"



2
P38HOD L 8.8" DIA 5.5"



3
P38G L 7.4" DIA 5.4"



4
P38V L 12.2" DIA 5.4"



5
P38BULL L 8" DIA 5.2"



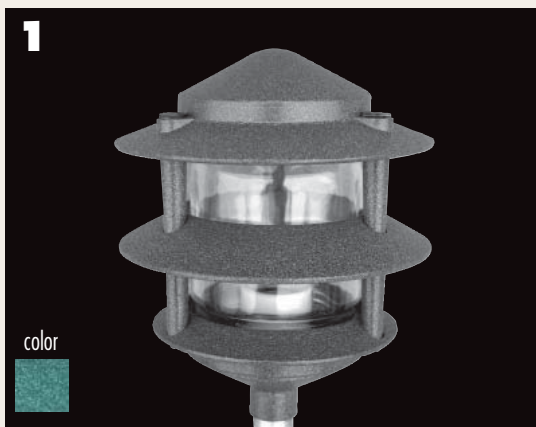
6
P1660BUL L 6" DIA 2.5"

NSi offers a variety of landscape lighting ideal for backyards, parks, signs and more. Die-cast aluminum housing, weatherproof gasket and drain holes, high impact resistant tempered glass & adjustable 1/2" NPT knuckle suitable for either up- or downlighting applications.

CATALOG NO.	UPC CODE	FIG. NO.	DESCRIPTION	LAMP TYPE	SHIPPING WEIGHT (LBS)
P38150BULBL	05353	1	150 Watt Par 38 Bullet Black	par reflector	3
P38HODBL	05354	2	Hood For Par 38 Bullet Black		0.5
P38GBL	05355	3	Guard For Par 38 Bullet Black		0.5
P38VBL	05356	4	Visor For Par 38 Black		0.5
P150BUL	05895	5	Bullet 150 Watt Large Reflector	"A" lamp	1.8
P1650BULBL	05358	6	50 Watt Par16 Bullet Black		0.8

PAGODAS 

NSi Louvered Pagodas feature die-cast aluminum housings, integral glare shield and tempered lens, and gasketed clear glass globe for weather-proofing and easy relamping. Includes 1/2" NPT easy-mount threaded nipple.



L275G **H** 7.5" **DIA** 6"



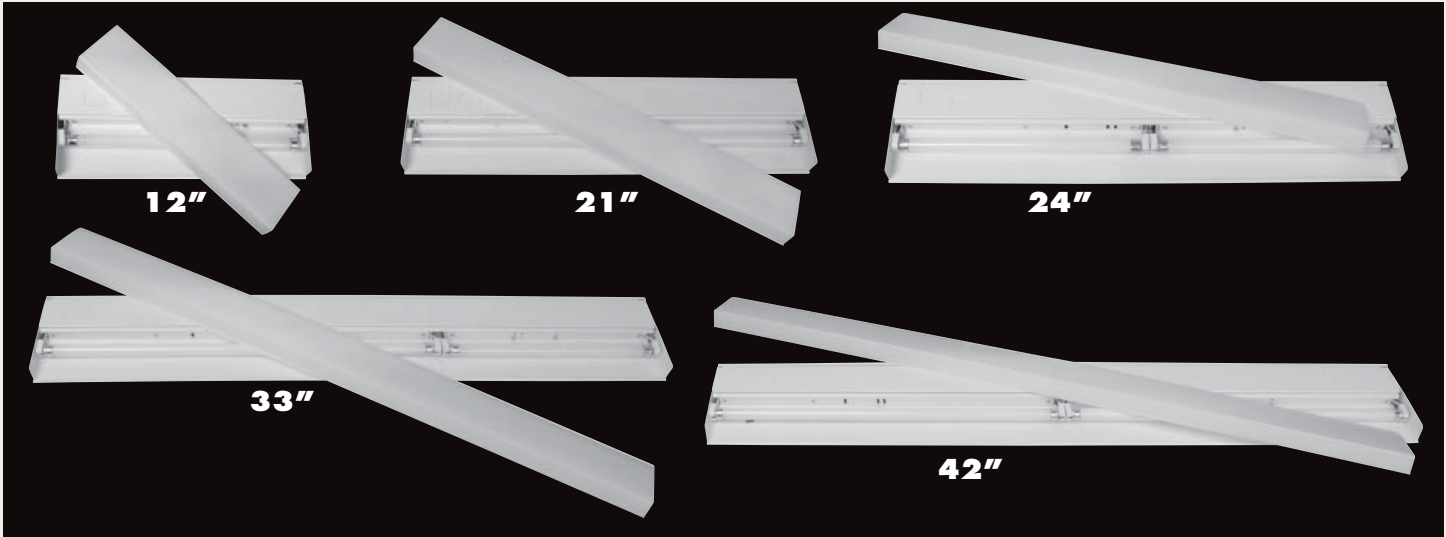
L3100G **H** 9.5" **DIA** 6"



L4100G **H** 9.5" **DIA** 10"

CATALOG NO.	UPC CODE	FIG. NO.	DESCRIPTION	VOLTS	LAMP TYPE	SHIPPING WEIGHT (LBS)
L275G	05359	1	Louver Pagoda 75 Watt Green	120V	A LAMP	3
L3100G	05360	2	Louver Pagoda 100 Watt Green	120V	A LAMP	3
L4100G	05361	3	Louver Pagoda with Shade 100 Watt Green	120V	A LAMP	4

FLUORESCENT UNDERCABINET LIGHTING 



energy saving
FLUORESCENT!


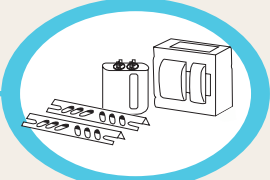
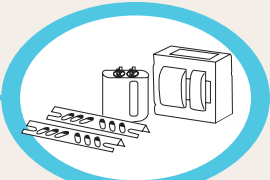
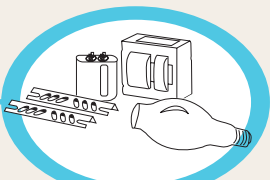
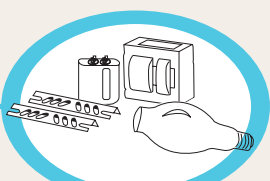
LAMPS INCLUDED

Fluorescent Undercabinet Lighting is constructed of heavy duty steel with white powdercoat finish and comes with UV inhibited acrylic diffuser with linear prism which snaps in for easy maintenance. 5" width. UL listed for damp location use.

ADVANTAGES:

- ULTRA THIN (ONLY ONE (1) INCH THICK!)
- K.O.'S ON TOP, SIDE AND BACK
- INCLUDES OUTLET AND SWITCH

CATALOG NO.	UPC CODE	DESCRIPTION	VOLTS	WIDTH	DEPTH	SHIPPING WEIGHT (LBS)
UCF128WT5	05362	Undercabinet 12" 8w T-5 Electronic Ballast With Lamp	110-125	5"	1"	6
UCF2113WT5	05363	Undercabinet 21" 13w T-5 Electronic Ballast With Lamp	110-125	5"	1"	9
UCF2416WT5	05364	Undercabinet 24" 16w T-5 Electronic Ballast With Lamp	110-125	5"	1"	11
UCF3321WT5	05365	Undercabinet 33" 21w T-5 Electronic Ballast With Lamp	110-125	5"	1"	14
UCF4226WT5	05366	Undercabinet 42" 26w T-5 Electronic Ballast With Lamp	110-125	5"	1"	18

CATALOG NO.	UPC CODE		DESCRIPTION	SHIPPING WEIGHT (LBS)	
BKS35R	05432		35 Watt HPS Reactor 120V No Cap	2.4	 <p>SODIUM KIT ONLY</p>
BKS50R	05433		50 Watt HPS Reactor 120V No Cap	2.8	
BKS70R	05434		70 Watt HPS Reactor 120V No Cap	3.4	
BKS100R	05435		100 Watt HPS Reactor 120V No Cap	3.6	
BKS50Q	05436		50 Watt HPS Quad – Cap, Ignitor & Brackets	3.8	
BKS70Q	05437		70 Watt HPS Quad – Cap, Ignitor & Brackets	6.9	
BKS100Q	05438		100 Watt HPS Quad – Cap, Ignitor & Brackets	8.6	
BKS150Q	05439		150 Watt HPS Quad – Cap, Ignitor & Brackets	10	
BKS250Q	05441		250 Watt HPS Quad – Cap, Ignitor & Brackets	13.7	
BKS250480	05442		250 Watt HPS 480v – Cap, Ignitor & Brackets	13.9	
BKS400Q	05443		400 Watt HPS Quad – Cap, Ignitor & Brackets	16.5	
BKS400480	05444		400 Watt HPS 480v – Cap, Ignitor & Brackets	19.7	
BKM50Q	05447		50 Watt Metal Halide Quad – Cap, Ignitor & Brackets	5.8	 <p>METAL HALIDE KIT ONLY</p>
BKM70Q	05448		70 Watt Metal Halide Quad – Cap, Ignitor & Brackets	7.3	
BKM100Q	05450		100 Watt Metal Halide Quad – Cap, Ignitor & Brackets	8	
BKM150Q	05451		150 Watt Metal Halide Quad – Cap, Ignitor & Brackets	8.5	
BKM175Q	05452		175 Watt Metal Halide Quad – Cap, Ignitor & Brackets	10.7	
BKM250Q	05453		250 Watt Metal Halide Quad – Cap, Ignitor & Brackets	12	
BKM250480	05454		250 Watt Metal Halide 480v – Cap, Ignitor & Brackets	11.6	
BKM400Q	05455		400 Watt Metal Halide Quad – Cap, Ignitor & Brackets	14.6	
BKM400480	05456		400 Watt Metal Halide 480v – Cap, Ignitor & Brackets	14.1	
BKM1000Q	05457		1000 Watt Metal Halide Quad – Cap, Ignitor & Brackets	24.7	
BKM1000480	05458		1000 Watt Metal Halide 480v – Cap, Ignitor & Brackets	24.7	
BKS35RL	05459		35 Watt HPS Reactor 120V No Cap with Lamp	3.4	 <p>SODIUM KIT WITH LAMP INCLUDED</p>
BKS50RL	05460		50 Watt HPS Reactor 120V No Cap with Lamp	3.8	
BKS70RL	05461		70 Watt HPS Reactor 120V No Capw/Lamp	4.4	
BKS100RL	05462		100 Watt HPS Reactor 120V No Capw/Lamp	4.6	
BKS50QL	05463		50 Watt HPS Quad – Cap, Ignitor & Bracketsw/Lamp	4.8	
BKS70QL	05464		70 Watt HPS Quad – Cap, Ignitor & Bracketsw/Lamp	7.9	
BKS100QL	05465		100 Watt HPS Quad – Cap, Ignitor & Bracketsw/Lamp	9.6	
BKS150QL	05466		150 Watt HPS Quad – Cap, Ignitor & Bracketsw/Lamp	11	
BKS250480L	05469		250 Watt HPS 480v – Cap, Ignitor & Brackets with Lamp	14.9	
BKS400QL	05470		400 Watt HPS Quad – Cap, Ignitor & Brackets WLamp	17.5	
BKS400480L	05471		400 Watt HPS 480v – Cap, Ignitor & Brackets with Lamp	20.7	
BKM50QL	05474		50 Watt Metal Halide Quad – Cap, Ignitor & Brackets with Lamp	6.8	 <p>METAL HALIDE KIT WITH LAMP INCLUDED</p>
BKM70QL	05475		70 Watt Metal Halide Quad – Cap, Ignitor & Brackets with Lamp	8.3	
BKM100QL	05477		100 Watt Metal Halide Quad – Cap, Ignitor & Brackets with Lamp	9	
BKM150QL	05478		150 Watt Metal Halide Quad – Cap, Ignitor & Brackets with Lamp	9.5	
BKM175QL	05479		175 Watt Metal Halide Quad – Cap, Ignitor & Brackets with Lamp	11.7	
BKM250QL	05480		250 Watt Metal Halide Quad – Cap, Ignitor & Brackets with Lamp	13	
BKM250480L	05481		250 Watt Metal Halide 480v – Cap, Ignitor & Brackets with Lamp	12.6	
BKM400QL	05482		400 Watt Metal Halide Quad – Cap, Ignitor & Brackets with Lamp	15.6	
BKM400480L	05483		400 Watt Metal Halide 480v – Cap, Ignitor & Brackets with Lamp	15.1	
BKM1000QL	05484		1000 Watt Metal Halide Quad – Cap, Ignitor & Brackets with Lamp	26	
BKM1000480L	05485		1000 Watt Metal Halide 480v – Cap, Ignitor & Brackets with Lamp	26	

CONSTRUCTION WORKLIGHT 



LAMPS INCLUDED
Versatile, portable 2-lamp fluorescent worklight has twin 42Watt 6500K fluorescent lamps and polycarbonate lens. High visibility yellow powdercoat case. Easy to carry. Use upright with feet or on its back. Magnetic mount for placement on vertical steel surfaces. Comes with 6' cord.

energy saving
FLUORESCENT!

WLF84 H 12.4" W 12.4" D 9"

CATALOG NO.	UPC CODE	DESCRIPTION	VOLTS	SHIPPING WEIGHT (LBS)
WLF84	05486	84 Watt Fluorescent Worklight With Lamps	128	5.5

PORTABLE FLOOR WORKLIGHT 

NSi's Portable Floor Worklights have professional steel stand construction, die cast aluminum weatherproof housing construction. Includes outdoor rated power cord, on off switch, quartz halogen bulb, carry handle and short stand. UL and CUL rated.



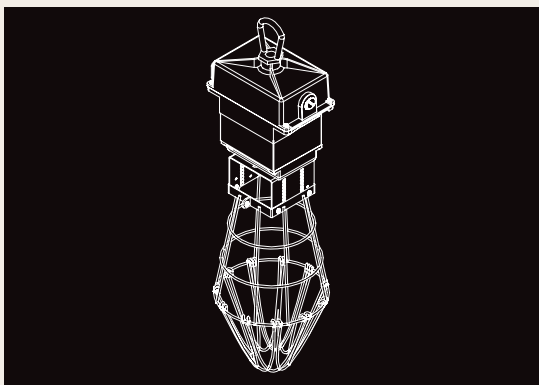
WLQ500 H 15.4" W 9.7"



WLQ600 H 13.8" W 11.4"

CATALOG NO.	UPC CODE	FIG. NO.	DESCRIPTION	SHIPPING WEIGHT (LBS)
WLQ600	05488	1	2 X 300 (600 Watt) Portable Work Light	7.9
WLQ500	05487	2	500 Watt Heavy Duty Portable Work Light	9.1

TEMPORARY HIGH-BAY / CONSTRUCTION LIGHT 



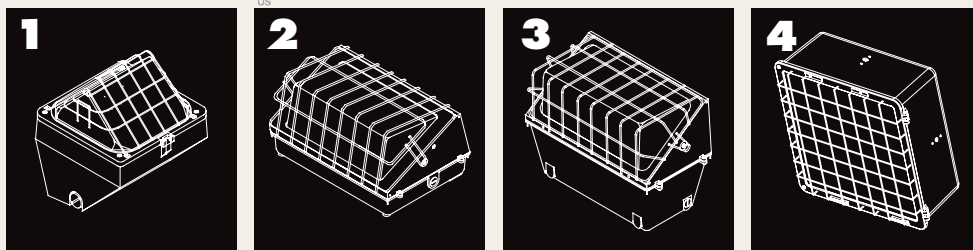
This Temporary High-Bay / Construction Worklight features die-cast aluminum housing with oversized compartment for capacitor and ignitor.

White powdercoat finish, mogul socket, snap-shut mounting hook and zinc plated steel wire guard with open/close design for easy relamping.

TCLM H 26" W 7.5" D 4.25"

CATALOG NO.	UPC CODE	DESCRIPTION	SHIPPING WEIGHT (LBS)
TCLM400	05490	400 Watt Metal Halide Temporary Construction Worklight	18

WIRE GUARDS 



NSi Wire Guards are stainless steel construction. For compact, medium and large wallpacks and 400 and 1000 watt flood lights.

CATALOG NO.	UPC CODE	FIG. NO.	DESCRIPTION	H (IN)	W (IN)	D (IN)	SHIPPING WEIGHT (LBS)
WGW200	05491	1	Wire Guard For Compact wallpack	5	7.3	4	2
WGW300	05492	2	Wire Guard For Medium Watt wallpack	8.9	13	3.2	2
WGW400	05493	3	Wire Guard For 400 Watt wallpack	8.3	17	3.6	2
WGF550	05494	4	Wire Guard For 400 Watt Flood	15.6	14.5	1.2	2
WGF650	05495	4	Wire Guard 1000 Watt Flood	22.25	22.25	.4	2

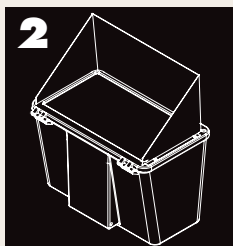
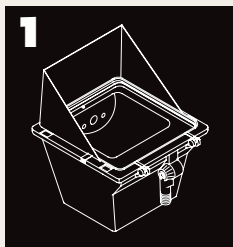
BAFFLES 



Baffles are made of 1 ½ mm aluminum with black powdercoat finish.

CATALOG NO.	UPC CODE	DESCRIPTION	H (IN)	W (IN)	D (IN)	SHIPPING WEIGHT (LBS)
BAF550	05496	Baffle For 400 Watt Flood	10.8	14.8	6.4	3
BAF650	05497	Baffle For 1000 Watt Flood	21.75	22	7.2	4

GLARE SHIELDS 



Glare Shields are made of 1 ½ mm aluminum with black powdercoat finish; can be reverse mounted to use as a back cutoff.

CATALOG NO.	UPC CODE	DESCRIPTION	H (IN)	W (IN)	D (IN)	SHIPPING WEIGHT (LBS)
GSLF150	05498	Glare Shield For Medium Flood	7.7	7.75	5	1
GSLPF350400	05499	Glare Shield For Low Profile Floods	8	15	5	2

POST TOP FITTER 



PTF Post top fitter in die cast aluminum with textured bronze finish; three 1/2" tapped holes with coin plugs, fitting 2 3/8 to 3 1/2" poles.

CATALOG NO.	UPC CODE	DESCRIPTION	H (IN)	W (IN)	D (IN)	SHIPPING WEIGHT (LBS)
PTF500	05506	Post Top Fitter	4.5	4	4	1.5

HEAVY DUTY GROUND STAKE 



Heavy Duty Ground Stake has position adjustable stabilizer and built in wiring compartment. Durable molded plastic with die cast fitting for 1/2" NPT threads, two 1/2" coin plugs for enclosed wiring and two 1/2" coin plugs outside for surface and through-wiring..

CATALOG NO.	UPC CODE	DESCRIPTION	STABILIZER		WIRING COMPARTMENT	SHIPPING WEIGHT (LBS)
			H (IN)	W (IN)	DIA (IN)	
GST		Non-metallic Heavy Duty Ground Stake	19	9	3.5	4

SAFETY CABLE



3' Steel Cable with steel eye and loop ends; clear vinyl coating. Strongly recommended for use with all pole mounted fixtures.

CATALOG NO.	UPC CODE	DESCRIPTION	SHIPPING WEIGHT (LBS)
SAFCBL	05507	Safety Cable	.4

BULKEAD TRIM RING 



Die cast aluminum ring for recessed mounting (of catalog numbers WPBE and WPBG) with 1 9/16" outside diameter.

CATALOG NO.	UPC CODE	DESCRIPTION	SHIPPING WEIGHT (LBS)
BHTR	05508	Bulkhead Trim Ring For WPB Series – bronze	4

Alphanumeric Index

CATALOG NUMBER	PAGE	UCF	PAGE
AEE	27	FLH	13
AEL	27	FLHB	1
ARE	27	FLLP	14
ASH	30	FLM	15
BAF	39	FLRB	14
BK	37	FLVT	4
BSM	31	GL	21
BHTR	40	GLG	21
CA	31	GSL, GSF	39
DEX	22	GST	40
DTD	32	HBAC	2
DR	31	HBAL	2
EEL	25	L	35
EL	19	LBAC	3
ELX	23	LBAL	3
EMHD	27	LT	4
EMRH	27	MSP	33
EMF	26	MSQ	33
EMT	26	MSSP	33
EX	24	P150, P1650	34
EXB	24	P16SQBL	17
EXL	22	P38	34
EXT	24	PHS	17
EXW	23	PHNM	17
DEX	22	PTF	40
FC	14	QBS, QBD	17
FG	31	QF	18
FL	13	RELX	23
FLA	12	SAFCBL	40
FLC	15	SH	30
FLF	16	TCLM	38
CATALOG NUMBER	PAGE	CATALOG NUMBER	PAGE



NSi Industries LLC Lighting Products Division



9730 Northcross Center Ct.
Huntersville, NC 28078
USA



Phone Toll Free:
800.321.5847



Fax Toll Free:
800.841.5566



Email:
nsi@nsiindustries.com



Website:
www.nsiindustries.com

Terms and Conditions of Sale

(Non-Stocking Distributor)

NSi Lighting Products Vendor Number: 662381

- Payment Terms:** 2% 10 Prox., Net 25th.
- Product Warranties:** NSi Lighting Products are warranted to be free of defects in material and workmanship for a period of one (1) year. HID fixtures carry a five (5) year warranty and ballasts are covered under the manufacturer's two (2) year warranty. Emergency & Exit Lighting are warranted for five (5) years with three (3) year warranty on batteries.
- Listings:** All fixtures will be listed by a nationally recognized testing laboratory. UL, CUL, ETL, NRTL, etc. We reserve the right to assign compliance listings to any of the laboratories indicated above and

recognized by the NEC.

- Product Changes:** We reserve the right to change pricing, specifications or construction of products without prior notice and without incurring obligation. Product specifications may differ from the catalog since product improvements are continuous. Consult factory for verification. The compliance of our products to individual project specifications and approval for their use, is not warranted by NSi Lighting Products. Specification sheets and photometric data are provided as a guideline for applications information.. Final consideration of any given application must take into consideration knowledge of the specific installation environment.
- Product Defectives:** We strive to produce the highest quality products on the market today. However, in the event that you have received a product, which is truly defective and not the result of shipping

damage, simply call your customer service representative and we will repair, replace, or provide parts to make it right.

- Product Returns:** No material will be accepted without prior written authorization. Credit will be allowed for actual quantities received and verified at our dock. Only product shipped to and returned from distributors' stock will be accepted for credit. Credit will be calculated at the original invoice price or the current price, whichever is lower. Except in the case of an NSi Lighting Products error, material must be returned freight prepaid. Original outbound freight will also be deducted from the credit. A restocking charge of 35% will apply to most returns. Product must be returned in the original, unopened and undamaged cartons and packed appropriately to protect the integrity of the product as well as the carton. The product must not be more than

one (1) year old. Please call or fax for NSi Lighting Products to issue an RGA number, without which no products will be accepted.

- Freight:** All orders over \$2,000 will be shipped freight prepaid via the carrier of our choosing.
- Special Orders and Custom Product:** All special orders or custom products are excluded from NSi Lighting Products' RGA policy; these products will not be allowed to be returned. Payment terms for custom products will be determined on a case-by-case basis.
- Programs and Promotions:** Stocking Distributor Programs or special promotions may qualify you for special terms and conditions; contact your NSi Lighting Products representative for details.

ELECTRICAL PRODUCTS UTILITY PRODUCTS HVAC/R...

and now LIGHTING PRODUCTS!

With NSi, you are never limited to the items that you see in one catalog. The Lighting Products Catalog contains only part of the family of NSi Products – Be sure to ask for a complete set of NSi literature, for thousands of other product solutions in Electrical, Utility Products and HVAC/R!



LIGHTING PRODUCTS

WEBSITE: www.nsiindustries.com

NSi INDUSTRIES Inc. 9730 Northcross Center Ct., HUNTERSVILLE, NORTH CAROLINA 28078

E-MAIL: nsi@nsiindustries.com

PHONE: 1.800.321.5847

FAX: 1.800.841.5566